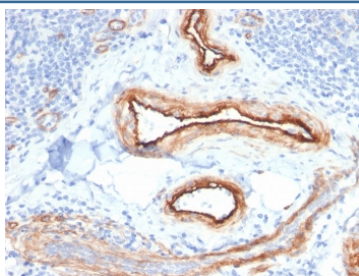


MTF1 Antibody / Metal regulatory transcription factor 1 [clone MTF1/2649] (V7966)

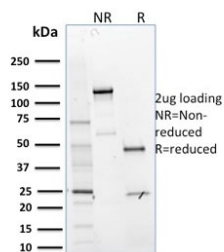
| Catalog No. | Formulation | Size |
|----------------|--|--------|
| V7966-100UG | 0.2 mg/ml in 1X PBS with 0.1 mg/ml BSA (US sourced) and 0.05% sodium azide | 100 ug |
| V7966-20UG | 0.2 mg/ml in 1X PBS with 0.1 mg/ml BSA (US sourced) and 0.05% sodium azide | 20 ug |
| V7966SAF-100UG | 1 mg/ml in 1X PBS; BSA free, sodium azide free | 100 ug |

[Bulk quote request](#)

| | |
|---------------------------|--|
| Availability | 1-3 business days |
| Species Reactivity | Human |
| Format | Purified |
| Clonality | Monoclonal (mouse origin) |
| Isotype | Mouse IgG1, kappa |
| Clone Name | MTF1/2649 |
| Purity | Protein G affinity chromatography |
| UniProt | Q14872 |
| Localization | Nuclear, cytoplasmic |
| Applications | Immunohistochemistry (FFPE) : 1-2ug/ml |
| Limitations | This MTF1 antibody is available for research use only. |



IHC staining of FFPE human renal cell carcinoma with MTF1 antibody. HIER: boil tissue sections in pH 9 10mM Tris with 1mM EDTA for 20 min and allow to cool before testing.



SDS-PAGE analysis of purified, BSA-free MTF1 antibody as confirmation of integrity and purity.

Description

The metal-responsive element (MRE)-binding transcription factor (MTF-1) stimulates the expression of metallothioneins in response to the exposure of cells to heavy metals. MTF-1 contains six zinc fingers in the DNA binding domain. The phosphorylation of MTF-1 in response to metal exposure appears to play a significant role in the ability of MTF-1 to activate metallothionein transcription. In addition to its role in metallothionein activation, MTF-1 is involved in a post-transcription regulatory complex for ribosomal protein S25. MTF-1, La and p53 inhibit the nuclear export of S25 mRNA in response to nutrient deprivation. Furthermore, MTF-1 acts as a chromatin insulator on integrated transgenes in cultured cells to insulate active loci against chromatin silencing.

Application Notes

Optimal dilution of the MTF1 antibody should be determined by the researcher.

Immunogen

A recombinant full-length human protein was used as the immunogen for the MTF1 antibody.

Storage

Store the MTF1 antibody at 2-8°C (with azide) or aliquot and store at -20°C or colder (without azide).