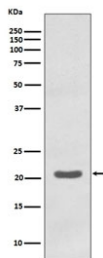


MTCO2 Antibody [clone FHI-13] (RQ4834)

Catalog No.	Formulation	Size
RQ4834	Antibody in PBS with 0.02% sodium azide, 50% glycerol and 0.4-0.5mg/ml BSA	100 ul

[Bulk quote request](#)

Availability	1-2 weeks
Species Reactivity	Human
Format	Purified
Host	Rabbit
Clonality	Rabbit Monoclonal
Isotype	Rabbit IgG
Clone Name	FHI-13
Purity	Affinity purified
UniProt	P00403
Applications	Western Blot : 1:500-1:2000
Limitations	This MTCO2 antibody is available for research use only.



Western blot testing of human K562 cell lysate with MTCO2 antibody. Predicted molecular weight ~25 kDa.

Description

Cytochrome c oxidase is the component of the respiratory chain that catalyzes the reduction of oxygen to water. Subunits 1-3 form the functional core of the enzyme complex. Subunit 2 transfers the electrons from cytochrome c via its binuclear copper A center to the bimetallic center of the catalytic subunit 1. [UniProt]

Application Notes

Optimal dilution of the MTCO2 antibody should be determined by the researcher.

Immunogen

A synthetic peptide specific to human MTCO2 was used as the immunogen for the MTCO2 antibody.

Storage

Store the MTCO2 antibody at -20°C.