

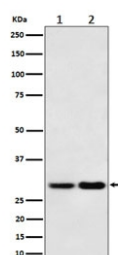
## MTAP Antibody / MTA phosphorylase [clone 28M98] (RQ8644)

| Catalog No. | Formulation  | Size   |
|-------------|--|--------|
| RQ8644      | Antibody in PBS with 0.02% sodium azide, 50% glycerol and 0.4-0.5mg/ml BSA | 100 ul |

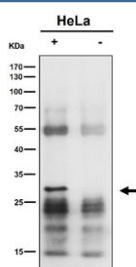
Recombinant RABBIT MONOCLONAL

[Bulk quote request](#)

|                    |   |
|--------------------|---|
| Availability       | 1-3 days  |
| Species Reactivity | Human, Mouse  |
| Format             | Purified  |
| Clonality          | Recombinant Rabbit Monoclonal                             |
| Isotype            | Rabbit IgG  |
| Clone Name         | 28M98   |
| Purity             | Affinity chromatography                                   |
| UniProt            | Q13126  |
| Applications       | Western Blot : 1:500-1:2000<br>Immunoprecipitation : 1:50 |
| Limitations        | This MTAP antibody is available for research use only.    |



Western blot testing of 1) human 293T and 2) mouse NIH 3T3 cell lysate with MTAP antibody. Expected molecular weight: 26-38 kDa (multiple isoforms).



Immunoprecipitation of MTAP protein from human HeLa whole cell lysate using MTAP antibody at 1:50.

## Description

Catalyzes the reversible phosphorylation of S-methyl-5'-thioadenosine (MTA) to adenine and 5-methylthioribose-1-phosphate. Involved in the breakdown of MTA, a major by-product of polyamine biosynthesis. Responsible for the first step in the methionine salvage pathway after MTA has been generated from S-adenosylmethionine. Has broad substrate specificity with 6-aminopurine nucleosides as preferred substrates. [UniProt]

## Application Notes

Optimal dilution of the MTAP antibody should be determined by the researcher.

## Immunogen

A synthetic peptide specific to human MTAP protein was used as the immunogen for the MTAP Antibody.

## Storage

Store the MTAP antibody at -20oC.