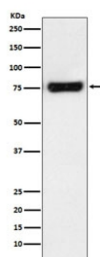


MTA2 Antibody / Metastasis associated 1 family member 2 [clone ACOE-13] (RQ4796)

| Catalog No. | Formulation | Size |
|-------------|--|--------|
| RQ4796 | Antibody in PBS with 0.02% sodium azide, 50% glycerol and 0.4-0.5mg/ml BSA | 100 ul |

[Bulk quote request](#)

| | |
|--------------------|--|
| Availability | 1-2 weeks |
| Species Reactivity | Human |
| Format | Purified |
| Clonality | Rabbit Monoclonal |
| Isotype | Rabbit IgG |
| Clone Name | ACOE-13 |
| Purity | Affinity purified |
| UniProt | O94776 |
| Applications | Western Blot : 1:500-1:2000 |
| Limitations | This MTA2 antibody is available for research use only. |



Western blot testing of human HeLa cell lysate with MTA2 antibody. Predicted molecular weight ~75 kDa.

Description

This gene encodes a protein that has been identified as a component of NuRD, a nucleosome remodeling deacetylase complex identified in the nucleus of human cells. It shows a very broad expression pattern and is strongly expressed in many tissues. It may represent one member of a small gene family that encode different but related proteins involved either directly or indirectly in transcriptional regulation. Their indirect effects on transcriptional regulation may include chromatin remodeling. It is closely related to another member of this family, a protein that has been correlated with the metastatic potential of certain carcinomas. These two proteins are so closely related that they share the same types of

domains. These domains include two DNA binding domains, a dimerization domain, and a domain commonly found in proteins that methylate DNA. One of the proteins known to be a target protein for this gene product is p53. Deacetylation of p53 is correlated with a loss of growth inhibition in transformed cells supporting a connection between these gene family members and metastasis. [RefSeq]

Application Notes

Optimal dilution of the MTA2 antibody should be determined by the researcher.

Immunogen

A synthetic peptide specific to human MTA2 was used as the immunogen for the MTA2 antibody.

Storage

Store the MTA2 antibody at -20oC.