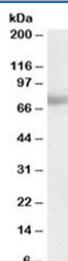


MTA1 Antibody (R35012)

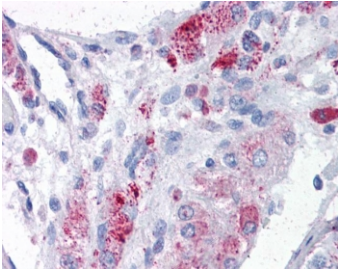
| Catalog No. | Formulation | Size |
|--------------|---|--------|
| R35012-100UG | 0.5 mg/ml in 1X TBS, pH7.3, with 0.5% BSA (US sourced) and 0.02% sodium azide | 100 ug |

[Bulk quote request](#)

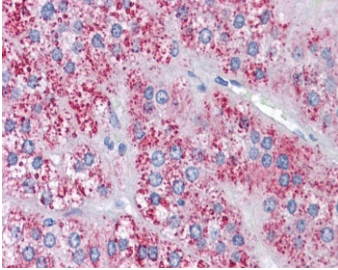
| | |
|--------------------|---|
| Availability | 1-3 business days |
| Species Reactivity | Human |
| Format | Antigen affinity purified |
| Host | Goat |
| Clonality | Polyclonal (goat origin) |
| Isotype | Goat Ig |
| Purity | Antigen affinity |
| Gene ID | 9112 |
| Localization | Nuclear, cytoplasmic |
| Applications | Western Blot : 0.03-0.1ug/ml IHC (FFPE) : 3.75ug/ml ELISA (peptide) LOD : 1:16000 |
| Limitations | This MTA1 antibody is available for research use only. |



Western blot testing of human placenta lysate with MTA1 antibody at 0.03ug/ml.
Predicted molecular weight: ~81 kDa.



IHC testing of FFPE human testis tissue with MTA1 antibody at 3.75ug/ml. Required HIER: steamed antigen retrieval with pH6 citrate buffer; AP-staining.



IHC testing of FFPE human adrenal gland tissue with MTA1 antibody at 3.75ug/ml. Required HIER: steamed antigen retrieval with pH6 citrate buffer; AP-staining.

Description

Additional name(s) for this target protein: Metastasis associated 1

Application Notes

Optimal dilution of the MTA1 antibody should be determined by the researcher.

Immunogen

Amino acids PGDVFYMPKE were used as the immunogen for this MTA1 antibody.

Storage

Aliquot and store the MTA1 antibody at -20oC.