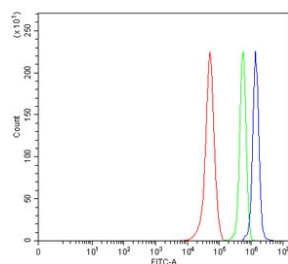


MSX2 Antibody / Hox-8 (RQ7311)

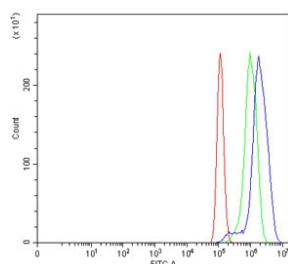
Catalog No.	Formulation	Size
RQ7311	0.5mg/ml if reconstituted with 0.2ml sterile DI water	100 ug

Bulk quote request

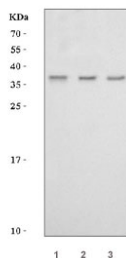
Availability	1-3 business days
Species Reactivity	Human
Format	Antigen affinity purified
Clonality	Polyclonal (rabbit origin)
Isotype	Rabbit IgG
Purity	Antigen affinity purified
Buffer	Lyophilized from 1X PBS with 2% Trehalose
UniProt	P35548
Applications	Western Blot : 0.5-1ug/ml Flow Cytometry : 1-3ug/million cells Direct ELISA : 0.1-0.5ug/ml
Limitations	This MSX2 antibody is available for research use only.



Flow cytometry testing of human RT4 cells with MSX2 antibody at 1ug/million cells (blocked with goat sera); Red=cells alone, Green=isotype control, Blue= MSX2 antibody.



Flow cytometry testing of human PC-3 cells with MSX2 antibody at 1ug/million cells (blocked with goat sera); Red=cells alone, Green=isotype control, Blue= MSX2 antibody.



Western blot testing of human 1) RT4, 2) MCF7 and 3) T-47D cell lysate with MSX2 antibody. Expected molecular weight 29-37 kDa.

Description

Homeobox protein MSX-2, also called Homeobox protein Hox-8 (Hox8) is a protein that in humans is encoded by the MSX2 gene. This gene encodes a member of the muscle segment homeobox gene family. The encoded protein is a transcriptional repressor whose normal activity may establish a balance between survival and apoptosis of neural crest-derived cells required for proper craniofacial morphogenesis. The encoded protein may also have a role in promoting cell growth under certain conditions and may be an important target for the RAS signaling pathways. Mutations in this gene are associated with parietal foramina 1 and craniosynostosis type 2.

Application Notes

Optimal dilution of the MSX2 antibody should be determined by the researcher.

Immunogen

Recombinant human protein (amino acids M1-M129) was used as the immunogen for the MSX2 antibody.

Storage

After reconstitution, the MSX2 antibody can be stored for up to one month at 4°C. For long-term, aliquot and store at -20°C. Avoid repeated freezing and thawing.