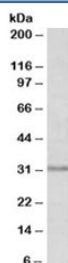


MSX1 Antibody (R36289)

Catalog No.	Formulation	Size
R36289-100UG	0.5 mg/ml in 1X TBS, pH7.3, with 0.5% BSA (US sourced) and 0.02% sodium azide	100 ug

[Bulk quote request](#)

Availability	1-3 business days
Species Reactivity	Human
Predicted Reactivity	Cow, Mouse, Pig, Rat
Format	Antigen affinity purified
Host	Goat
Clonality	Polyclonal (goat origin)
Isotype	Goat Ig
Purity	Antigen affinity
Gene ID	4487
Applications	Western Blot : 0.3-1ug/ml ELISA (peptide) LOD : 1:64000
Limitations	This MSX1 antibody is available for research use only.



Western blot testing of human prostate lysate with MSX1 antibody at 0.3ug/ml. Predicted molecular weight: ~31kDa.

Description

Additional name(s) for this target protein: Msh homeo box 1; homeobox 7; HOX7

Application Notes

Optimal dilution of the MSX1 antibody should be determined by the researcher.

Immunogen

Amino acids TSLPLGVKVEDS were used as the immunogen for this MSX1 antibody.

Storage

Aliquot and store the MSX1 antibody at -20oC.