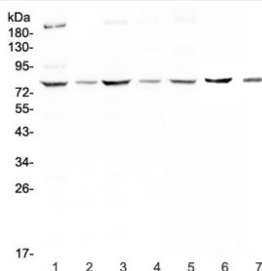


## MST1 Antibody (RQ4066)

Catalog No.	Formulation	Size
RQ4066	0.5mg/ml if reconstituted with 0.2ml sterile DI water	100 ug

### Bulk quote request

<b>Availability</b>	1-3 business days
<b>Species Reactivity</b>	Human, Mouse, Rat
<b>Format</b>	Antigen affinity purified
<b>Host</b>	Rabbit
<b>Clonality</b>	Polyclonal (rabbit origin)
<b>Isotype</b>	Rabbit IgG
<b>Purity</b>	Antigen affinity purified
<b>Buffer</b>	Lyophilized from 1X PBS with 2% Trehalose and 0.025% sodium azide
<b>UniProt</b>	P26927
<b>Applications</b>	Western Blot : 0.5-1ug/ml
<b>Limitations</b>	This MST1 antibody is available for research use only.



Western blot testing of human 1) HeLa, 2) MCF7, 3) HepG2, 4) SKOV3, 5) A549, 6) rat kidney and 7) mouse kidney lysate with MST1 antibody at 0.5ug/ml. Predicted molecular weight ~80 kDa.

## Description

Macrophage-stimulating protein (MSP), also known as HLP, HGFL, or HGFLP, is a protein that in humans is encoded by the MST1 gene. The protein encoded by this gene contains four kringle domains and a serine protease domain, similar to that found in hepatic growth factor. Despite the presence of the serine protease domain, the encoded protein may not have any proteolytic activity. The receptor for this protein is RON tyrosine kinase, which upon activation stimulates ciliary motility of ciliated epithelial lung cells. This protein is secreted and cleaved to form an alpha chain and a beta chain bridged by disulfide bonds.

## Application Notes

Optimal dilution of the MST1 antibody should be determined by the researcher.

## Immunogen

Amino acids QRSPLNDFQVLRGTELQHLLHAVVPGPWQEDVADAE from the human protein were used as the immunogen for the MST1 antibody.

## Storage

After reconstitution, the MST1 antibody can be stored for up to one month at 4°C. For long-term, aliquot and store at -20°C. Avoid repeated freezing and thawing.