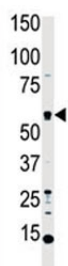


MST1 Antibody (Mammalian STE20-like protein kinase 1) (F50888)

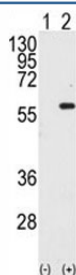
Catalog No.	Formulation	Size
F50888-0.4ML	In 1X PBS, pH 7.4, with 0.09% sodium azide	0.4 ml
F50888-0.08ML	In 1X PBS, pH 7.4, with 0.09% sodium azide	0.08 ml

[Bulk quote request](#)

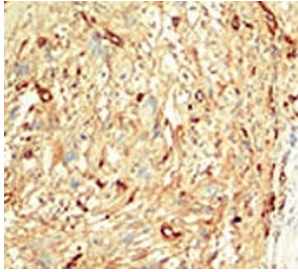
Availability	1-3 business days
Species Reactivity	Human
Predicted Reactivity	Bovine
Format	Purified
Clonality	Polyclonal (rabbit origin)
Isotype	Rabbit Ig
Purity	Purified
UniProt	Q13043
Applications	Western Blot : 1:1000 IHC (Paraffin) : 1:50-1:100
Limitations	This MST1 antibody is available for research use only.



Western blot analysis of MST1 antibody and HL-60 cell lysate. Predicted molecular weight ~ 56 kDa.



Western blot analysis of STK4 / MST1 antibody and 293 cell lysate either nontransfected (Lane 1) or transiently transfected with the STK4 gene (2). Predicted molecular weight ~ 56 kDa.



IHC analysis of FFPE human breast carcinoma tissue stained with the MST1 antibody

Description

MST1 is a cytoplasmic kinase that is structurally similar to the yeast Ste20p kinase, which acts upstream of the stress-induced mitogen-activated protein kinase cascade. The encoded protein can phosphorylate myelin basic protein and undergoes autophosphorylation. A caspase-cleaved fragment of the encoded protein has been shown to be capable of phosphorylating histone H2B. The particular phosphorylation catalyzed by this protein has been correlated with apoptosis, and it is possible that this protein induces the chromatin condensation observed in this process.

Application Notes

Titration of the MST1 antibody may be required due to differences in protocols and secondary/substrate sensitivity.

Immunogen

A portion of amino acids 385-415 from the human protein was used as the immunogen for this MST1 antibody.

Storage

Aliquot the MST1 antibody and store frozen at -20oC or colder. Avoid repeated freeze-thaw cycles.