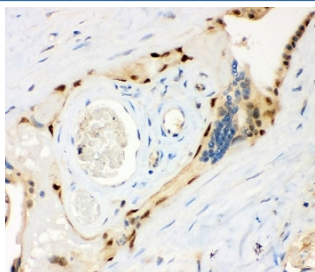


MSK1 Antibody / RPS6KA5 (R31681)

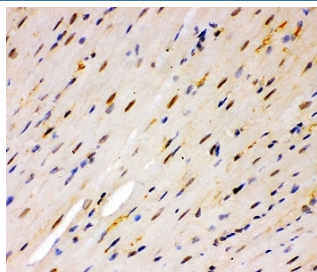
Catalog No.	Formulation	Size
R31681	0.5mg/ml if reconstituted with 0.2ml sterile DI water	100 ug

Bulk quote request

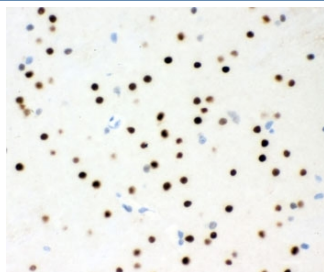
Availability	1-3 business days
Species Reactivity	Human, Mouse, Rat
Format	Antigen affinity purified
Clonality	Polyclonal (rabbit origin)
Isotype	Rabbit IgG
Purity	Antigen affinity
Buffer	Lyophilized from 1X PBS with 2.5% BSA and 0.025% sodium azide
Gene ID	9252
Localization	Nuclear + cytoplasmic
Applications	Western Blot : 0.5-1ug/ml Immunohistochemistry (FFPE) : 0.5-1ug/ml Immunocytochemistry : 0.5-1ug/ml Immunofluorescence : 5ug/ml
Limitations	This MSK1 antibody is available for research use only.



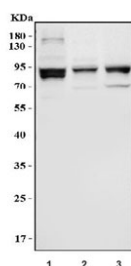
IHC staining of FFPE human placental tissue with MSK1 antibody. HIER: boil tissue sections in pH8 EDTA for 20 min and allow to cool before testing.



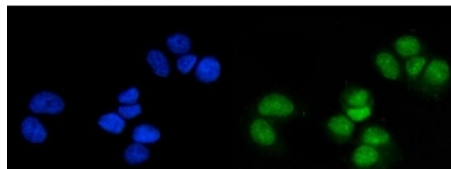
IHC staining of FFPE mouse heart tissue with MSK1 antibody. HIER: boil tissue sections in pH8 EDTA for 20 min and allow to cool before testing.



IHC staining of FFPE rat brain tissue with MSK1 antibody. HIER: boil tissue sections in pH8 EDTA for 20 min and allow to cool before testing.



Western blot testing of 1) human HEL cell lysate, 2) mouse brain tissue lysate and 3) rat brain tissue lysate with MSK1 antibody. Expected molecular weight: ~90 kDa.



Immunofluorescent staining of FFPE human T-47D cells with MSK1 antibody (green) and DAPI nuclear stain (blue). HIER: steam section in pH6 citrate buffer for 20 min.

Description

Ribosomal protein S6 kinase alpha-5, also known as MSK1, is an enzyme that in humans is encoded by the RPS6KA5 gene. It belongs to the AGC family of kinases. MSK1 gene is mapped to chromosome 14q31-q32. Northern blot analysis indicated that MSK1 was expressed as a 4-kb mRNA in all tissues tested, with the highest levels of expression in brain, muscle, and placenta. MSK1 was activated in vitro and in vivo by either ERK or SAPK2 proteins. It has been found that MSK1, rather than MAPKAP-K1 or MAPKAP-K2/K3, mediates activation of the cAMP response element-binding protein and activating transcription factor-1 by either growth factors or stress signals.

Application Notes

The stated application concentrations are suggested starting amounts. Titration of the MSK1 antibody may be required due to differences in protocols and secondary/substrate sensitivity.

Immunogen

Human partial recombinant protein (AA 540-665) was used as the immunogen for this MSK1 antibody.

Storage

After reconstitution, the MSK1 antibody can be stored for up to one month at 4°C. For long-term, aliquot and store at -20°C. Avoid repeated freezing and thawing.