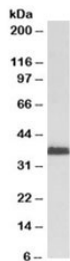


MSI2 Antibody (R35285)

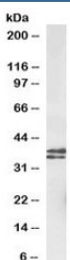
Catalog No.	Formulation	Size
R35285-100UG	0.5 mg/ml in 1X TBS, pH7.3, with 0.5% BSA (US sourced) and 0.02% sodium azide	100 ug

[Bulk quote request](#)

Availability	1-3 business days
Species Reactivity	Human, Mouse
Predicted Reactivity	Dog
Format	Antigen affinity purified
Host	Goat
Clonality	Polyclonal (goat origin)
Isotype	Goat Ig
Purity	Antigen affinity
Gene ID	124540
Applications	Western Blot : 1-3ug/ml ELISA (peptide) LOD : 1:128000
Limitations	This MSI2 antibody is available for research use only.



Western blot testing of KELLY cell lysate with MSI2 antibody at 2ug/ml. Predicted molecular weight: ~35kDa.



Western blot testing of mouse fetal brain lysate with MSI2 antibody at 1ug/ml. Predicted molecular weight: ~35kDa.

Description

Additional name(s) for this target protein: Musashi-2; Musashi RNA-binding protein 2

Application Notes

Optimal dilution of the MSI2 antibody should be determined by the researcher.

1. This MSI2 antibody is specific for isoform a.

Immunogen

Amino acids QGTSGSANDSQHD were used as the immunogen for this MSI2 antibody.

Storage

Aliquot and store the MSI2 antibody at -20oC.