

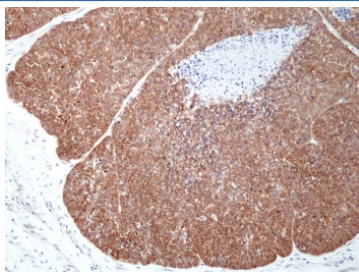
MSI2 Antibody / Musashi 2 [clone RM422] (R20436)

Catalog No.	Formulation	Size
R20436-0.1ML	Antibody in PBS with 50% glycerol, 1% BSA and 0.09% sodium azide	100 ul

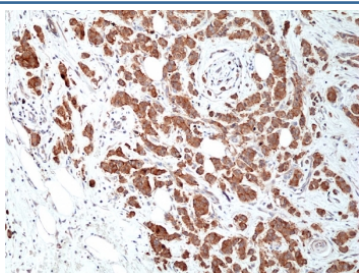
Recombinant **RABBIT MONOCLONAL**

[Bulk quote request](#)

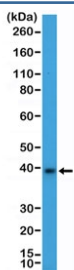
Availability	1-3 business days
Species Reactivity	Human, Mouse
Format	Purified
Clonality	Recombinant Rabbit Monoclonal
Isotype	Rabbit IgG
Clone Name	RM422
Purity	Protein A purified from animal origin-free supernatant
UniProt	Q96DH6
Localization	Cytoplasmic
Applications	Immunohistochemistry (FFPE) : 1:100-1:400 Western Blot : 1:1000-1:2000
Limitations	This recombinant MSI2 antibody is available for research use only.



IHC staining of FFPE human esophageal squamous carcinoma tissue with recombinant MSI2 antibody at 1:100.



IHC staining of FFPE human breast ductal carcinoma tissue with recombinant MSI2 antibody at 1:400.



Western blot testing of mouse brain tissue lysate with recombinant MSI2 antibody at 1:2000 dilution. Predicted molecular weight ~35 kDa.

Description

This antibody reacts to human RNA-binding protein Musashi homolog 2 (Musashi 2).

Application Notes

The stated application concentrations are suggested starting points. Titration of the recombinant MSI2 antibody may be required due to differences in protocols and secondary/substrate sensitivity.

Immunogen

A peptide corresponding to the internal region of human Musashi 2 was used as the immunogen for the recombinant MSI2 antibody.

Storage

Store the recombinant MSI2 antibody at -20°C.