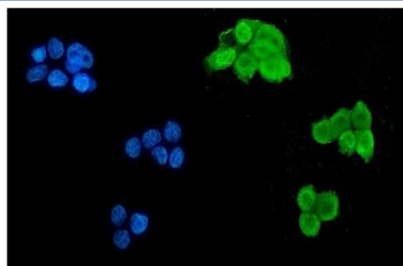


## Msi1 Antibody / Musashi 1 [clone 2B9] (RQ5670)

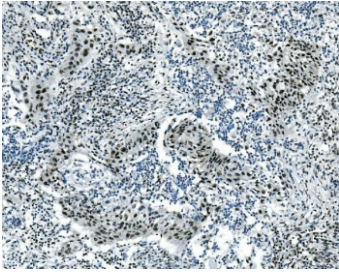
Catalog No.	Formulation	Size
RQ5670	0.5mg/ml if reconstituted with 0.2ml sterile DI water	100 ug

**Bulk quote request**

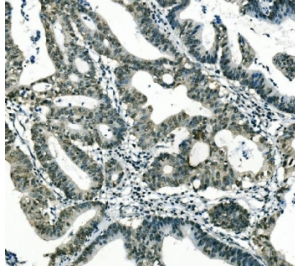
<b>Availability</b>	1-3 business days
<b>Species Reactivity</b>	Human, Mouse, Rat
<b>Format</b>	Antigen affinity purified
<b>Host</b>	Mouse
<b>Clonality</b>	Monoclonal
<b>Isotype</b>	Mouse IgG2b
<b>Clone Name</b>	2B9
<b>Purity</b>	Affinity purified
<b>Buffer</b>	Lyophilized from 1X PBS with 2% Trehalose and 0.025% sodium azide
<b>UniProt</b>	O43347
<b>Localization</b>	Nuclear, cytoplasmic
<b>Applications</b>	Western Blot : 0.5-1ug/ml Immunohistochemistry : 1-2ug/ml Immunofluorescence : 2-4ug/ml
<b>Limitations</b>	This Msi1 antibody is available for research use only.



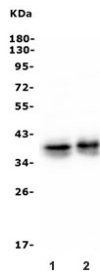
Immunofluorescent staining of FFPE human MCF7 cells with Msi1 antibody (green) and DAPI nuclear stain (blue). HIER: steam section in pH6 citrate buffer for 20 min.



IHC staining of FFPE human lung cancer with Msi1 antibody. HIER: boil tissue sections in pH8 EDTA for 20 min and allow to cool before testing.



IHC staining of FFPE human rectum cancer with Msi1 antibody. HIER: boil tissue sections in pH8 EDTA for 20 min and allow to cool before testing.



Western blot testing of human 1) A549 and 2) PC-3 lysate with Msi1 antibody. Predicted molecular weight ~39 kDa.

## Description

RNA-binding protein Musashi homolog 1 is a protein that in humans is encoded by the MSI1 gene. This gene encodes a protein containing two conserved tandem RNA recognition motifs. Similar proteins in other species function as RNA-binding proteins and play central roles in posttranscriptional gene regulation. Expression of this gene has been correlated with the grade of the malignancy and proliferative activity in gliomas and melanomas. A pseudogene for this gene is located on chromosome 11q13.

## Application Notes

Optimal dilution of the Msi1 antibody should be determined by the researcher.

## Immunogen

Amino acids KMFIGGLSWQTTQEGLREYFGQFGEVKECLVMRD from the human protein were used as the immunogen for the Msi1 antibody.

## Storage

After reconstitution, the Msi1 antibody can be stored for up to one month at 4°C. For long-term, aliquot and store at -20°C. Avoid repeated freezing and thawing.

