

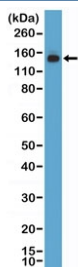
## MSH6 Antibody [clone RM376] (R20395)

Catalog No.	Formulation	Size
R20395-0.1ML	Antibody in PBS with 50% glycerol, 1% BSA and 0.09% sodium azide	100 ul

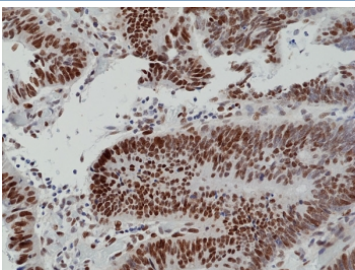
Recombinant **RABBIT MONOCLONAL**

[Bulk quote request](#)

<b>Availability</b>	1-3 business days
<b>Species Reactivity</b>	Human
<b>Format</b>	Purified
<b>Host</b>	Rabbit
<b>Clonality</b>	Recombinant Rabbit Monoclonal
<b>Isotype</b>	Rabbit IgG
<b>Clone Name</b>	RM376
<b>Purity</b>	Protein A purified from animal origin-free supernatant
<b>UniProt</b>	P52701
<b>Localization</b>	Nuclear
<b>Applications</b>	Immunohistochemistry (FFPE) : 1:100-1:500 Western Blot : 1:1000-1:2000
<b>Limitations</b>	This recombinant MSH6 antibody is available for research use only.



Western blot testing of human HEK293 cell lysate with recombinant MSH6 antibody at 1:1000 dilution. Expected molecular weight: 120-160 kDa depending on phosphorylation level.



IHC staining of FFPE human colon cancer tissue with recombinant MSH6 antibody at 1:100.

## Description

This antibody reacts to human DNA mismatch repair protein Msh6.

## Application Notes

The stated application concentrations are suggested starting points. Titration of the recombinant MSH6 antibody may be required due to differences in protocols and secondary/substrate sensitivity.

## Immunogen

A mammalian cell-expressed recombinant protein fragment of human MSH6 was used as the immunogen for the recombinant MSH6 antibody.

## Storage

Store the recombinant MSH6 antibody at -20oC.