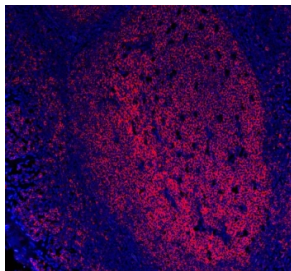


MS4A1 Antibody / CD20 [clone 4I11] (RQ6739)

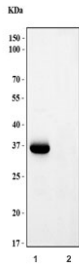
Catalog No.	Formulation	Size
RQ6739	0.5mg/ml if reconstituted with 0.2ml sterile DI water	100 ug

Bulk quote request

Availability	1-3 business days
Species Reactivity	Human
Format	Purified
Host	Mouse
Clonality	Monoclonal (mouse origin)
Isotype	Mouse IgG2a
Clone Name	4I11
Purity	Affinity purified
Buffer	Lyophilized from 1X PBS with 2% Trehalose
UniProt	P11836
Localization	Predominantly cell surface with some cytoplasmic
Applications	Western Blot : 1-2ug/ml Immunofluorescence (FFPE) : 5ug/ml
Limitations	This MS4A1 antibody is available for research use only.



Immunofluorescent staining of FFPE human tonsil tissue with MS4A1 antibody (red) and DAPI nuclear stain (blue). HIER: steam section in pH6 citrate buffer for 20 min.



Western blot testing of human 1) Raji and 2) Jurkat cell lysate with MS4A1 antibody.
Predicted molecular weight ~33 kDa.

Description

CD20, also known as MS4A1, is an activated-glycosylated phosphoprotein expressed on the surface of all B-cells beginning at the pro-B phase (CD45R+, CD117+) and progressively increasing in concentration until maturity. It is mapped to 11q12.2. This gene encodes a member of the membrane-spanning 4A gene family. The function of CD20 is to enable optimal B-cell immune response, specifically against T-independent antigens. It is suspected that CD20 acts as a calcium channel in the cell membrane. What's more, this protein may be involved in the regulation of B-cell activation and proliferation.

Application Notes

Optimal dilution of the MS4A1 antibody should be determined by the researcher.

Immunogen

Recombinant human protein (amino acids M1-P297) was used as the immunogen for the MS4A1 antibody.

Storage

After reconstitution, the MS4A1 antibody can be stored for up to one month at 4°C. For long-term, aliquot and store at -20°C. Avoid repeated freezing and thawing.