

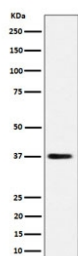
MRPS31 Antibody / Small ribosomal subunit protein mS31 / Imogen 38 [clone 29M40] (RQ8751)

Catalog No.	Formulation	Size
RQ8751	Antibody in PBS with 0.02% sodium azide, 50% glycerol and 0.4-0.5mg/ml BSA	100 ul

Recombinant **RABBIT MONOCLONAL**

[Bulk quote request](#)

Availability	1-3 days
Species Reactivity	Human
Format	Purified
Host	Rabbit
Clonality	Recombinant Rabbit Monoclonal
Isotype	Rabbit IgG
Clone Name	29M40
Purity	Affinity chromatography
UniProt	Q92665
Applications	Western Blot : 1:500-1:2000
Limitations	This MRPS31 antibody is available for research use only.



Western blot testing of human HepG2 cell lysate with MRPS31 antibody. Predicted molecular weight ~45 kDa, commonly observed at ~38 kDa.

Description

Additional names: 28S ribosomal protein S31, mitochondrial; MRP-S31; S31mt; IMOGN38

Application Notes

Optimal dilution of the MRPS31 antibody should be determined by the researcher.

Immunogen

A synthetic peptide specific to human Small ribosomal subunit protein mS31 was used as the immunogen for the MRPS31 antibody.

Storage

Store the MRPS31 antibody at -20oC.