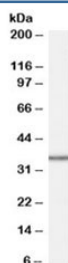


MRPL3 Antibody (R34938)

Catalog No.	Formulation	Size
R34938-100UG	0.5 mg/ml in 1X TBS, pH7.3, with 0.5% BSA (US sourced) and 0.02% sodium azide	100 ug

[Bulk quote request](#)

Availability	1-3 business days
Species Reactivity	Human
Predicted Reactivity	Cow, Pig
Format	Antigen affinity purified
Host	Goat
Clonality	Polyclonal (goat origin)
Isotype	Goat Ig
Purity	Antigen affinity
Gene ID	11222
Applications	Western Blot : 1-3ug/ml ELISA (peptide) LOD : 1:32000
Limitations	This MRPL3 antibody is available for research use only.



Western blot testing of HepG2 cell lysate with MRPL3 antibody at 1ug/ml. Predicted molecular weight: ~38kDa.

Description

Additional name(s) for this target protein: Mitochondrial ribosomal protein L3, MRL3, RPML3

Application Notes

Optimal dilution of the MRPL3 antibody should be determined by the researcher.

Immunogen

Amino acids NVCQPGAPSITFA were used as the immunogen for this MRPL3 antibody.

Storage

Aliquot and store the MRPL3 antibody at -20oC.