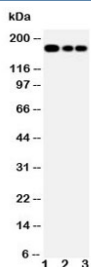


MRP1 Antibody (R30717)

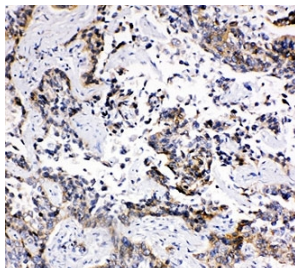
Catalog No.	Formulation	Size
R30717	0.5mg/ml if reconstituted with 0.2ml sterile DI water	100 ug

[Bulk quote request](#)

Availability	1-3 business days
Species Reactivity	Human, Mouse, Rat
Format	Antigen affinity purified
Host	Rabbit
Clonality	Polyclonal (rabbit origin)
Isotype	Rabbit IgG
Purity	Antigen affinity
Buffer	Lyophilized from 1X PBS with 2.5% BSA and 0.025% sodium azide/thimerosal
UniProt	P33527
Localization	Cytoplasmic and cell surface
Applications	Western Blot : 0.5-1ug/ml IHC (FFPE) : 0.5-1ug/ml
Limitations	This MRP1 antibody is available for research use only.



Western blot testing of MRP1 antibody and Lane 1: Jurkat; 2: CEM; 3: A549 lysate. Predicted molecular weight: 152-172 kDa (multiple isoforms), can be observed at ~190 kDa.



IHC-P: MRP1 antibody testing of human lung cancer tissue. Required HIER: steam section in pH6 citrate buffer for 20 min.

Description

ABCC1 (ATP-binding cassette, subfamily C, member 1), also called MRP1, is a protein that in humans is encoded by the ABCC1 gene. ABCC1 is a member of the superfamily of ATP-binding cassette (ABC) transporters. It is a plasma membrane drug-efflux pump. The gene is mapped to chromosome 16p13.1 by isotopic in situ hybridization. ABCC1/MRP1 functions as a multispecific organic anion transporter, with oxidized glutathione, cysteinyl leukotrienes, and activated aflatoxin B1 as substrates and it also transports glucuronides and sulfate conjugates of steroid hormones and bile salts. Blocking MRP1 efflux pumps increases the susceptibility of the cells to the toxic effects of unconjugated bilirubin, suggesting that it is an important protector in this scenario. The protein clears beta-amyloid from brains of mice and can be activated by thiethylperazine. And Chemotaxis assays show that MRP1-mediated transport of S1P influenced mast-cell migration, but not mast-cell degranulation.

Application Notes

The stated application concentrations are suggested starting amounts. Titration of the MRP1 antibody may be required due to differences in protocols and secondary/substrate sensitivity.

Immunogen

Amino acids LLQQRGLFY SMAKDAGLV (human) were used as the immunogen for this MRP1 antibody.

Storage

After reconstitution, the MRP1 antibody can be stored for up to one month at 4°C. For long-term, aliquot and store at -20°C. Avoid repeated freezing and thawing.