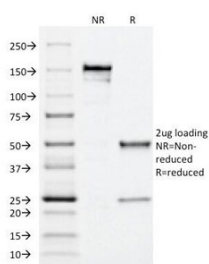


MRP1 Antibody / ABCC1 [clone MRP1/1344] (V3529)

Catalog No.	Formulation	Size
V3529-100UG	0.2 mg/ml in 1X PBS with 0.1 mg/ml BSA (US sourced) and 0.05% sodium azide	100 ug
V3529-20UG	0.2 mg/ml in 1X PBS with 0.1 mg/ml BSA (US sourced) and 0.05% sodium azide	20 ug
V3529SAF-100UG	1 mg/ml in 1X PBS; BSA free, sodium azide free	100 ug

[Bulk quote request](#)

Species Reactivity	Human
Format	Purified
Host	Mouse
Clonality	Monoclonal (mouse origin)
Isotype	Mouse IgG2a, kappa
Clone Name	MRP1/1344
Purity	Protein G affinity chromatography
Buffer	1X PBS, pH 7.4
UniProt	P33527
Gene ID	4363
Localization	Cytoplasmic and cell surface
Applications	Flow Cytometry : 1-2ug/10 ⁶ cells Immunofluorescence : 1-2ug/ml
Limitations	This MRP1 antibody is available for research use only.



SDS-PAGE Analysis of Purified, BSA-Free MRP1 Antibody (clone MRP1/1344).
Confirmation of Integrity and Purity of the Antibody.

Description

The two members of the large family of ABC transporters known to confer multidrug resistance in human cancer cells are the MDR1 P-glycoprotein and the multidrug-resistance protein MRP1. MRP1 is an integral membrane protein that contains an MDR-like core, an N-terminal membrane-bound region and a cytoplasmic linker, and it is expressed in various cerebral cells, as well as in lung, testis and peripheral blood.

Application Notes

The concentration stated for each application is a general starting point. Variations in protocols, secondaries and substrates may require the MRP1 antibody to be titered up or down for optimal performance.

Immunogen

Human recombinant full-length protein was used as the immunogen for this MRP1 antibody.

Storage

Store the MRP1 antibody at 2-8oC (with azide) or aliquot and store at -20oC or colder (without azide).

References (1)