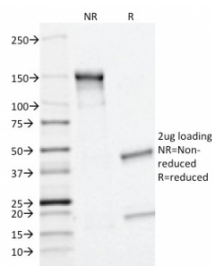


## MRP1 Antibody / ABCC1 [clone MRP1/1343] (V5538)

Catalog No.	Formulation	Size
V5538-100UG	0.2 mg/ml in 1X PBS with 0.1 mg/ml BSA (US sourced), 0.05% sodium azide	100 ug
V5538-20UG	0.2 mg/ml in 1X PBS with 0.1 mg/ml BSA (US sourced), 0.05% sodium azide	20 ug
V5538SAF-100UG	1 mg/ml in 1X PBS; BSA free, sodium azide free	100 ug

[Bulk quote request](#)

<b>Availability</b>	1-3 business days
<b>Species Reactivity</b>	Human
<b>Format</b>	Purified
<b>Clonality</b>	Monoclonal (mouse origin)
<b>Isotype</b>	Mouse IgG1, kappa
<b>Clone Name</b>	MRP1/1343
<b>Purity</b>	Protein A/G affinity
<b>UniProt</b>	P33527
<b>Localization</b>	Cell membrane
<b>Applications</b>	Flow Cytometry : 1-2ug/million cells Western Blot : 2-4ug/ml
<b>Limitations</b>	This MRP1 antibody is available for research use only.



SDS-PAGE analysis of purified, BSA-free MRP1 antibody (clone MRP1/1343) as confirmation of integrity and purity.

## Description

The two members of the large family of ABC transporters known to confer multidrug resistance in human cancer cells are the MDR1 P-glycoprotein and the multidrug-resistance protein MRP1. MRP1 is an integral membrane protein that contains an MDR-like core, an N-terminal membrane-bound region and a cytoplasmic linker, and it is expressed in

various cerebral cells, as well as in lung, testis and peripheral blood.

## **Application Notes**

Optimal dilution of the MRP1 antibody should be determined by the researcher.

## **Immunogen**

Recombinant full-length human ABCC1/MRP1 protein was used as the immunogen for the MRP1 antibody.

## **Storage**

Aliquot the MRP1 antibody and store frozen at -20oC or colder. Avoid repeated freeze-thaw cycles.