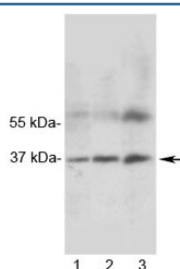


MRGX1 Antibody (R32283)

Catalog No.	Formulation	Size
R32283	0.5mg/ml if reconstituted with 0.2ml sterile DI water	100 ug

Bulk quote request

Availability	1-3 business days
Species Reactivity	Rat
Format	Antigen affinity purified
Clonality	Polyclonal (rabbit origin)
Isotype	Rabbit IgG
Purity	Antigen affinity
Buffer	Lyophilized from 1X PBS with 2.5% BSA and 0.025% sodium azide/thimerosal
UniProt	Q8R4G1
Applications	Western Blot : 0.1-0.5ug/ml IHC (FFPE) : 0.5-1ug/ml
Limitations	This MRGX1 antibody is available for research use only.



Western blot testing of 1) rat heart, 2) rat skeletal muscle and 3) human MCF7 lysate with MRGX1 antibody. Expected molecular weight ~37 kDa.

Description

MAS-related G-protein coupled receptor, member C, also known as MRGPCR or MRGPRX1, is a human gene. The Mas-related genes(Mrgs) comprise a family of >50 G protein-coupled receptors(GPCRs), many of which are expressed in specific subsets of nociceptive sensory neurons in mice. In contrast, humans contain a related but nonorthologous family of genes, called MrgXs or sensory neuron-specific receptors, of which many fewer appear to be expressed in sensory neurons.

Application Notes

Optimal dilution of the MRGX1 antibody should be determined by the researcher.

1. HIER: Boil the paraffin sections in pH 6, 10mM citrate buffer for 20 minutes and allow to cool prior to staining.

Immunogen

Amino acids TLNKTGHPSCRPILT of rat MRGX1 were used as the immunogen for the MRGX1 antibody.

Storage

After reconstitution, the MRGX1 antibody can be stored for up to one month at 4oC. For long-term, aliquot and store at -20oC. Avoid repeated freezing and thawing.