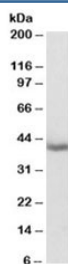


MRG15 Antibody (R33154)

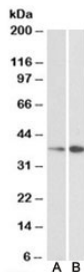
Catalog No.	Formulation	Size
R33154-100UG	0.5 mg/ml in 1X TBS, pH7.3, with 0.5% BSA (US sourced) and 0.02% sodium azide	100 ug

[Bulk quote request](#)

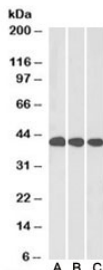
Availability	1-3 business days
Species Reactivity	Human, Mouse
Predicted Reactivity	Rat, Pig, Cow
Format	Antigen affinity purified
Host	Goat
Clonality	Polyclonal (goat origin)
Isotype	Goat Ig
Purity	Antigen affinity
UniProt	Q9UBU8
Gene ID	10933
Applications	Western Blot : 0.1-0.3ug/ml Immunohistochemistry (FFPE) : 5ug/ml ELISA (peptide) LOD : 1:128000
Limitations	This MRG15 antibody is available for research use only.



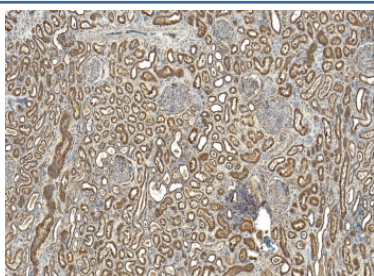
Western blot testing of mouse liver lysate with MRG15 antibody at 0.1ug/ml. Predicted molecular weight: ~41/37 kDa (isoforms 1/2).



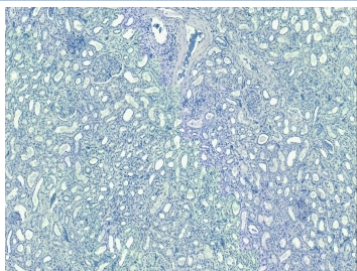
Western blot testing of A) mouse NIH3T3 and B) human HepG2 lysate (nuclear fraction) with MRG15 antibody at 0.1ug/ml. Predicted molecular weight: ~41/37 kDa (isoforms 1/2).



Western blot testing of liver lysate from A) mouse, B) rat and C) pig with MRG15 antibody at 0.1ug/ml. Predicted molecular weight: ~41/37 kDa (isoforms 1/2).



IHC staining of FFPE human kidney tissue with MRG15 antibody at 5ug/ml. Required HIER: steamed antigen retrieval with pH6 citrate buffer; HRP-staining.



Negative control: IHC staining of FFPE human kidney tissue with no primary antibody. Required HIER: steamed antigen retrieval with pH6 citrate buffer; HRP-staining.

Description

Additional name(s) for this target protein: MORF-related gene 15; MORF4L1

Application Notes

Optimal dilution of the MRG15 antibody should be determined by the researcher.

Immunogen

Amino acids APKQDPKPKFQEG were used as the immunogen for this MRG15 antibody.

Storage

Aliquot and store the MRG15 antibody at -20oC.

