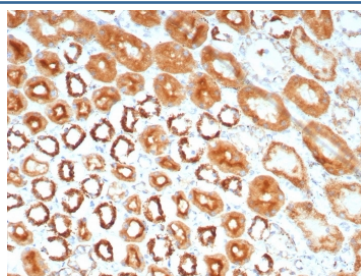


## MR1 Antibody / MHC class I related protein 1 [clone MR1/7578] (V4757)

Catalog No.	Formulation	Size
V4757-100UG	0.2 mg/ml in 1X PBS with 0.1 mg/ml BSA (US sourced), 0.05% sodium azide	100 ug
V4757-20UG	0.2 mg/ml in 1X PBS with 0.1 mg/ml BSA (US sourced), 0.05% sodium azide	20 ug
V4757SAF-100UG	1 mg/ml in 1X PBS; BSA free, sodium azide free	100 ug

[Bulk quote request](#)

<b>Availability</b>	1-3 business days
<b>Species Reactivity</b>	Human
<b>Format</b>	Purified
<b>Host</b>	Mouse
<b>Clonality</b>	Monoclonal (mouse origin)
<b>Isotype</b>	Mouse IgG2, kappa
<b>Clone Name</b>	MR1/7578
<b>Purity</b>	Protein A/G affinity
<b>UniProt</b>	Q95460
<b>Localization</b>	Secreted, Cell membrane, Cytoplasm
<b>Applications</b>	Immunohistochemistry (FFPE) : 1-2ug/ml for 30 min at RT
<b>Limitations</b>	This MR1 antibody is available for research use only.



IHC staining of FFPE human kidney tissue with MR1 antibody (clone MR1/7578). HIER: boil tissue sections in pH 9 10mM Tris with 1mM EDTA for 20 min and allow to cool before testing.

## Description

MR1 (major histocompatibility complex, class I-related), also known as HLALS, is a 341 amino acid single-pass membrane protein that localizes to the endoplasmic reticulum, as well as to the extracellular side of the cell membrane,

and contains one Ig-like C1-type domain. Expressed ubiquitously, MR1 exists as a heterodimer with b-2-Microglobulin and plays an important role in antigen presentation, specifically in the development and expansion of mucosal-associated invariant T cells (MAITs). MAITs are located in the gut and are involved in monitoring flora levels, as well as in conveying distress signals to other areas of the body, indicating a role for MR1 in proper digestion and immune system function. MR1 exists as four alternatively spliced isoforms and is encoded by a gene which maps to human chromosome 1.

## Application Notes

Optimal dilution of the MR1 antibody should be determined by the researcher.

## Immunogen

A recombinant partial protein sequence (within amino acids 50-250) from the human protein was used as the immunogen for the MR1 antibody.

## Storage

Aliquot the MR1 antibody and store frozen at -20°C or colder. Avoid repeated freeze-thaw cycles.