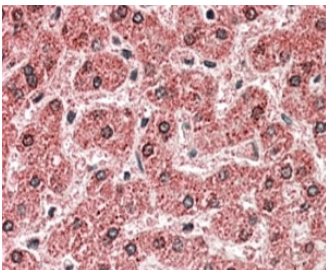


MPV17 Antibody (R35422)

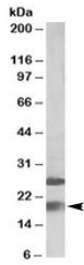
Catalog No.	Formulation	Size
R35422-100UG	0.5 mg/ml in 1X TBS, pH7.3, with 0.5% BSA (US sourced) and 0.02% sodium azide	100 ug

[Bulk quote request](#)

Availability	1-3 business days
Species Reactivity	Human
Predicted Reactivity	Cow, Dog, Mouse, Rat
Format	Antigen affinity purified
Host	Goat
Clonality	Polyclonal (goat origin)
Isotype	Goat Ig
Purity	Antigen affinity
Gene ID	4358
Applications	Western Blot : 1-3ug/ml Immunohistochemistry (FFPE) : 5-10ug/ml ELISA (peptide) LOD : 1:32000
Limitations	This MPV17 antibody is available for research use only.



IHC staining of FFPE human liver with MPV17 antibody at 5ug/ml. HIER: steamed with pH6 citrate buffer, AP-staining.



Western blot testing of human frontal cortex lysate with MPV17 antibody at 2ug/ml. The expected ~19kDa band and additional ~26kDa band are both blocked by immunizing peptide.

Description

Additional name(s) for this target protein: MpV17 mitochondrial inner membrane protein

Application Notes

Optimal dilution of the MPV17 antibody should be determined by the researcher.

Immunogen

Amino acids QRALAAHPWKVQ were used as the immunogen for this MPV17 antibody.

Storage

Aliquot and store the MPV17 antibody at -20oC.