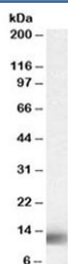


MPS1 Antibody (R35054)

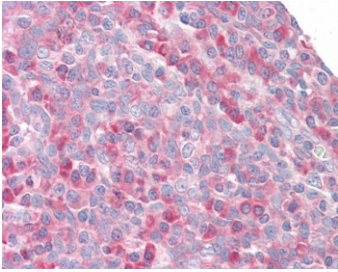
Catalog No.	Formulation	Size
R35054-100UG	0.5 mg/ml in 1X TBS, pH7.3, with 0.5% BSA (US sourced) and 0.02% sodium azide	100 ug

[Bulk quote request](#)

Availability	1-3 business days
Species Reactivity	Human
Predicted Reactivity	Mouse, Rat
Format	Antigen affinity purified
Host	Goat
Clonality	Polyclonal (goat origin)
Isotype	Goat Ig
Purity	Antigen affinity
Gene ID	6232
Localization	Cytoplasmic, nuclear
Applications	Western Blot : 0.03-0.1ug/ml IHC (FFPE) : 3.75ug/ml ELISA (peptide) LOD : 1:128000
Limitations	This MPS1 antibody is available for research use only.



Western blot testing of Jurkat lysate with MPS1 antibody at 0.03ug/ml. Predicted molecular weight: ~10 kDa.



IHC testing of FFPE human tonsil tissue with MPS1 antibody at 3.75ug/ml. Required HIER: steamed antigen retrieval with pH6 citrate buffer; AP-staining.

Description

Additional name(s) for this target protein: Metallopanstimulin 1, RPS27, Ribosomal protein S27; RPS27

Application Notes

Optimal dilution of the MPS1 antibody should be determined by the researcher.

Immunogen

Amino acids PLAKDLLHPSPEE were used as the immunogen for this MPS1 antibody.

Storage

Aliquot and store the MPS1 antibody at -20oC.