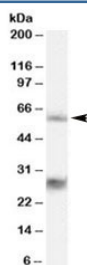


## MPP6 Antibody (R35416)

Catalog No.	Formulation	Size
R35416-100UG	0.5 mg/ml in 1X TBS, pH7.3, with 0.5% BSA (US sourced) and 0.02% sodium azide	100 ug

[Bulk quote request](#)

Availability	1-3 business days
Species Reactivity	Human
Predicted Reactivity	Cow, Dog, Mouse, Pig, Rat
Format	Antigen affinity purified
Host	Goat
Clonality	Polyclonal (goat origin)
Isotype	Goat Ig
Purity	Antigen affinity
Gene ID	51678
Applications	Western Blot : 0.3-1ug/ml ELISA (peptide) LOD : 1:128000
Limitations	This MPP6 antibody is available for research use only.



Western blot testing of 293 lysate with MPP6 antibody at 0.3ug/ml. The expected ~60kDa band and the additional ~28kDa band are both blocked by the immunizing peptide.

## Description

Additional name(s) for this target protein: Membrane protein palmitoylated 6, VAM1, PALS2, MAGUK; MPP6

## Application Notes

Optimal dilution of the MPP6 antibody should be determined by the researcher.

## **Immunogen**

Amino acids QQVLENLTLPSS were used as the immunogen for this MPP6 antibody.

## **Storage**

Aliquot and store the MPP6 antibody at -20oC.