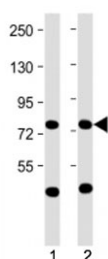


MPL Antibody / Thrombopoietin Receptor (N-Terminal Region) (F54100)

Catalog No.	Formulation	Size
F54100-0.2ML	In 1X PBS, pH 7.4, with 0.09% sodium azide	0.2 ml
F54100-0.05ML	In 1X PBS, pH 7.4, with 0.09% sodium azide	0.05 ml

[Bulk quote request](#)

Availability	1-3 business days
Species Reactivity	Human
Format	Antigen affinity purified
Host	Rabbit
Clonality	Polyclonal (rabbit origin)
Isotype	Rabbit Ig
Purity	Antigen affinity
UniProt	P40238
Applications	Western Blot : 1:2000
Limitations	This MPL antibody is available for research use only.



Western blot testing of MPL antibody at 1:2000: Lane 1) human Daudi and 2) HepG2 cell lysate. Predicted molecular weight ~71 kDa.

Description

Myeloproliferative leukemia protein (MPL) is the receptor for Thrombopoietin. May represent a regulatory molecule specific for TPO-R-dependent immune responses. [UniProt]

Application Notes

The stated application concentrations are suggested starting points. Titration of the MPL antibody may be required due to differences in protocols and secondary/substrate sensitivity.

Immunogen

A portion of amino acids 133-166 from human MPL was used as the immunogen for the MPL antibody.

Storage

Aliquot the MPL antibody and store frozen at -20oC or colder. Avoid repeated freeze-thaw cycles.