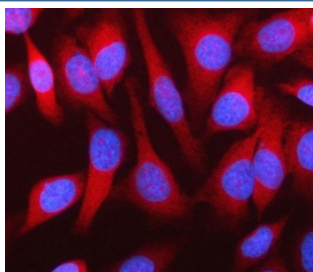


MPHOSPH9 Antibody / M-phase phosphoprotein 9 (RQ8422)

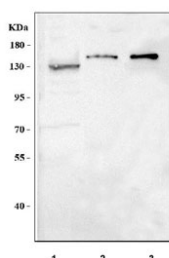
Catalog No.	Formulation	Size
RQ8422	0.5mg/ml if reconstituted with 0.2ml sterile DI water	100 ug

Bulk quote request

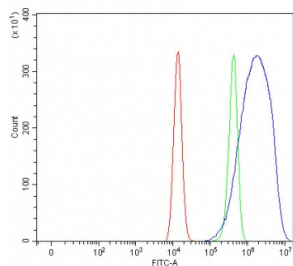
Availability	1-3 business days
Species Reactivity	Human, Mouse, Rat
Format	Antigen affinity purified
Clonality	Polyclonal (rabbit origin)
Isotype	Rabbit IgG
Purity	Antigen affinity purified
Buffer	Lyophilized from 1X PBS with 2% Trehalose
UniProt	A0A8I5IG87
Applications	Western Blot : 0.5-1ug/ml Immunofluorescence : 5ug/ml Flow Cytometry : 1-3ug/million cells ELISA : 0.1-0.5ug/ml
Limitations	This MPHOSPH9 antibody is available for research use only.



Immunofluorescent staining of FFPE human HeLa cells with MPHOSPH9 antibody (red) and DAPI nuclear stain (blue). HIER: steam section in pH6 citrate buffer for 20 min.



Western blot testing of 1) human Jurkat, 2) rat brain and 3) mouse brain tissue lysate with MPHOSPH9 antibody. Predicted molecular weight ~130 kDa.



Flow cytometry testing of fixed and permeabilized human HEL cells with MPHOSPH9 antibody at 1ug/million cells (blocked with goat sera); Red=cells alone, Green=isotype control, Blue= MPHOSPH9 antibody.

Description

MPHOSPH9, also known as M-phase phosphoprotein 9, has 2 isoforms, a 1,031 amino acid isoform 1 that is 116 kDa and a 1,028 amino acid isoform 2 that is 116 kDa, localizes to the distal and proximal end of centriole pairs in duplicated centrosomes, and in ciliated cells, localizes to the distal and proximal end of daughter centriole and proximal of the mother centriole but not in the distal end of the mother centriole. Little is known about its function. Studies on this protein have shown a relationship with the following diseases and disorders: corneal ulcer, rosacea, multiple sclerosis, Fanconi's anemia, anemia, and neuronitis. This protein has also shown an interaction with YWHAG, USP11, SVIL, YWHAZ, WNK1, and UBC in M phase of mitotic cell cycle pathways.

Application Notes

Optimal dilution of the MPHOSPH9 antibody should be determined by the researcher.

Immunogen

An E.coli-derived human recombinant protein (S49-Q1059) was used as the immunogen for the MPHOSPH9 antibody.

Storage

After reconstitution, the MPHOSPH9 antibody can be stored for up to one month at 4oC. For long-term, aliquot and store at -20oC. Avoid repeated freezing and thawing.