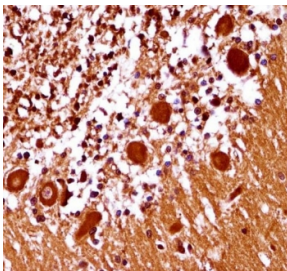


MOX-1 Antibody / MEOX1 (F54693)

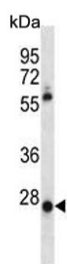
Catalog No.	Formulation	Size
F54693-0.4ML	In 1X PBS, pH 7.4, with 0.09% sodium azide	0.4 ml
F54693-0.08ML	In 1X PBS, pH 7.4, with 0.09% sodium azide	0.08 ml

[Bulk quote request](#)

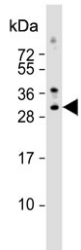
Availability	1-3 business days
Species Reactivity	Human
Format	Purified
Clonality	Polyclonal (rabbit origin)
Isotype	Rabbit Ig
Purity	Antigen affinity purified
UniProt	P50221
Localization	Cytoplasmic, nuclear
Applications	Western Blot : 1:500-1:2000 Immunohistochemistry (FFPE) : 1:25
Limitations	This MOX-1 antibody is available for research use only.



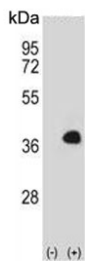
IHC testing of FFPE human cerebellum tissue with MOX-1 antibody. HIER: steam section in pH6 citrate buffer for 20 min and allow to cool prior to staining.



Western blot testing of human HepG2 cell lysate with MOX-1 antibody. Predicted molecular weight ~28 kDa.



Western blot testing of human Jurkat cell lysate with MOX-1 antibody. Predicted molecular weight ~28 kDa.



Western blot testing of 1) non-transfected and 2) transfected 293 cell lysate with MOX-1 antibody. Predicted molecular weight ~28 kDa.

Description

This gene encodes a member of a subfamily of non-clustered, diverged, antennapedia-like homeobox-containing genes. The encoded protein may play a role in the molecular signaling network regulating somite development. Alternatively spliced transcript variants encoding different isoforms have been described.

Application Notes

The stated application concentrations are suggested starting points. Titration of the MOX-1 antibody may be required due to differences in protocols and secondary/substrate sensitivity.

Immunogen

A portion of amino acids 136-165 from the human protein was used as the immunogen for the MOX-1 antibody.

Storage

Aliquot the MOX-1 antibody and store frozen at -20°C or colder. Avoid repeated freeze-thaw cycles.