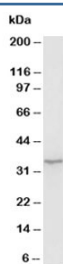


Morg1 Antibody (R30232)

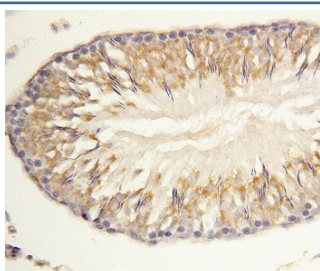
Catalog No.	Formulation	Size
R30232	0.5mg/ml if reconstituted with 0.2ml sterile DI water	100 ug

Bulk quote request

Availability	1-3 business days
Species Reactivity	Human, Mouse, Rat
Format	Antigen affinity purified
Clonality	Polyclonal (rabbit origin)
Isotype	Rabbit IgG
Purity	Antigen affinity
Buffer	Lyophilized from 1X PBS with 2.5% BSA and 0.025% sodium azide/thimerosal
UniProt	Q9BRX9
Applications	Western Blot : 0.5-1ug/ml IHC (FFPE) : 0.5-1ug/ml
Limitations	This Morg1 antibody is available for research use only.



Western blot testing of Morg1 antibody and rat brain tissue lysate



IHC-P: Morg1 antibody testing of rat lung tissue

Description

MORG1(mitogen-activated protein kinase organizer 1), a member of the WD-40 protein family that was isolated as a binding partner of the extracellular signal-regulated kinase(ERK) pathway scaffold protein MP1. MORG1 specifically associates with several components of the ERK pathway, including MP1, Raf-1, MEK, and ERK, and stabilizes their assembly into an oligomeric complex. MORG1 facilitates ERK activation when cells are stimulated with lysophosphatidic acid, phorbol 12-myristate 13-acetate, or serum, but not in response to epidermal growth factor. Suppression of MORG1 by short interfering RNA leads to a marked reduction in ERK activity when cells are stimulated with serum. MORG1 is a component of a modular scaffold system that participates in the regulation of agonist-specific ERK signaling.

Application Notes

The stated application concentrations are suggested starting amounts. Titration of the MORG1 antibody may be required due to differences in protocols and secondary/substrate sensitivity.

Immunogen

An amino acid sequence from the N-terminus of human MORG1 (RAVRFNVDGNYCLTC) was used as the immunogen for this MORG1 antibody.

Storage

After reconstitution, the MORG1 antibody can be stored for up to one month at 4°C. For long-term, aliquot and store at -20°C. Avoid repeated freezing and thawing.