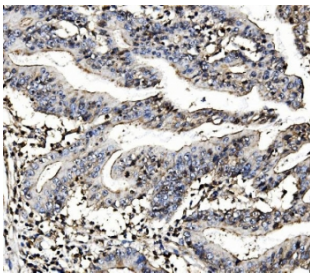


## MORC3 Antibody (RQ6060)

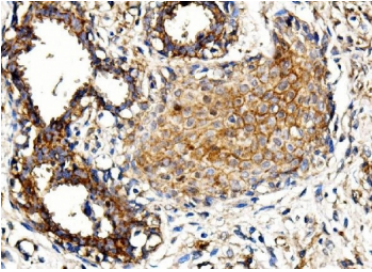
Catalog No.	Formulation	Size
RQ6060	0.5mg/ml if reconstituted with 0.2ml sterile DI water	100 ug

### Bulk quote request

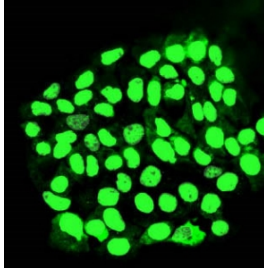
<b>Availability</b>	1-3 business days
<b>Species Reactivity</b>	Human, Mouse, Rat
<b>Format</b>	Antigen affinity purified
<b>Host</b>	Rabbit
<b>Clonality</b>	Polyclonal (rabbit origin)
<b>Isotype</b>	Rabbit IgG
<b>Purity</b>	Affinity purified
<b>Buffer</b>	Lyophilized from 1X PBS with 2% Trehalose and 0.025% sodium azide
<b>UniProt</b>	Q14149
<b>Localization</b>	Nuclear, cytoplasmic
<b>Applications</b>	Western Blot : 0.5-1ug/ml Immunohistochemistry : 1-2ug/ml Immunofluorescence : 2-4ug/ml Flow Cytometry : 1-3ug/million cells
<b>Limitations</b>	This MORC3 antibody is available for research use only.



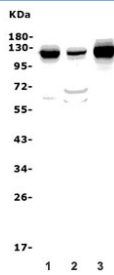
IHC staining of FFPE human rectal cancer with MORC3 antibody. HIER: boil tissue sections in pH8 EDTA for 20 min and allow to cool before testing.



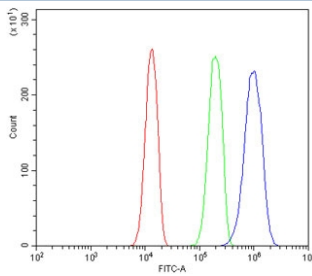
IHC staining of FFPE human breast cancer with MORC3 antibody. HIER: boil tissue sections in pH8 EDTA for 20 min and allow to cool before testing.



Immunofluorescent staining of FFPE human A431 cells with MORC3 antibody (green). HIER: steam section in pH6 citrate buffer for 20 min.



Western blot testing of 1) rat heart, 2) rat liver and 3) mouse heart lysate with MORC3 antibody. Expected molecular weight: 107-130 kDa depending on level of SUMOylation.



Flow cytometry testing of human A431 cells with MORC3 antibody at 1 ug/million cells (blocked with goat sera); Red=cells alone, Green=isotype control, Blue= MORC3 antibody.

## Description

MORC family CW-type zinc finger protein 3 is a protein that in humans is encoded by the MORC3 gene. This gene is mapped to 21q22.12. This gene encodes a protein that localizes to the nuclear matrix and forms nuclear bodies via an ATP-dependent mechanism. The protein is predicted to have coiled-coil and zinc finger domains and has RNA binding activity. Alternative splicing produces multiple transcript variants encoding distinct isoforms.

## Application Notes

Optimal dilution of the MORC3 antibody should be determined by the researcher.

## Immunogen

Amino acids ESLKLRSLRVNMGVQLLAMIVPDLDLQQVNYDVD from the human protein were used as the immunogen for the MORC3 antibody.

## Storage

After reconstitution, the MORC3 antibody can be stored for up to one month at 4°C. For long-term, aliquot and store at -20°C. Avoid repeated freezing and thawing.

