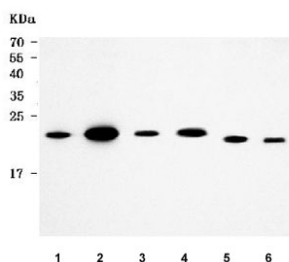


## Monocyte Chemotactic Protein 2 Antibody / MCP2 / CCL8 (RQ7723)

Catalog No.	Formulation	Size
RQ7723	0.5mg/ml if reconstituted with 0.2ml sterile DI water	100 ug

**Bulk quote request**

<b>Availability</b>	1-3 business days
<b>Species Reactivity</b>	Human, Mouse, Rat
<b>Format</b>	Antigen affinity purified
<b>Clonality</b>	Polyclonal (rabbit origin)
<b>Isotype</b>	Rabbit IgG
<b>Purity</b>	Antigen affinity purified
<b>Buffer</b>	Lyophilized from 1X PBS with 2% Trehalose
<b>UniProt</b>	P80075
<b>Applications</b>	Western Blot : 0.5-1ug/ml Direct ELISA : 0.1-0.5ug/ml
<b>Limitations</b>	This Monocyte Chemotactic Protein 2 antibody is available for research use only.



Western blot testing of 1) human Jurkat, 2) human 293T, 3) rat small intestine, 4) rat lung, 5) mouse RAW264.7 and 6) mouse NIH 3T3 cell lysate with Monocyte Chemotactic Protein 2 antibody. Predicted molecular weight ~11 kDa, higher molecular weight bands may represent dimerization.

### Description

Chemokine (C-C motif) ligand 8 (CCL8), also known as monocyte chemoattractant protein 2 (MCP2), is a protein that in humans is encoded by the CCL8 gene. This antimicrobial gene is one of several chemokine genes clustered on the q-arm of chromosome 17. Chemokines form a superfamily of secreted proteins involved in immunoregulatory and inflammatory processes. The superfamily is divided into four subfamilies based on the arrangement of N-terminal cysteine residues of the mature peptide. This chemokine is a member of the CC subfamily which is characterized by two adjacent cysteine residues. This cytokine displays chemotactic activity for monocytes, lymphocytes, basophils and eosinophils. By recruiting leukocytes to sites of inflammation this cytokine may contribute to tumor-associated leukocyte infiltration and to the

antiviral state against HIV infection.

## Application Notes

Optimal dilution of the Monocyte Chemotactic Protein 2 antibody should be determined by the researcher.

## Immunogen

E. coli-derived recombinant human protein (amino acids Q24-P99) was used as the immunogen for the Monocyte Chemotactic Protein 2 antibody.

## Storage

After reconstitution, the Monocyte Chemotactic Protein 2 antibody can be stored for up to one month at 4°C. For long-term, aliquot and store at -20°C. Avoid repeated freezing and thawing.