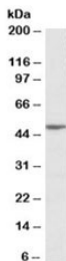


MON1A Antibody (R35711)

Catalog No.	Formulation	Size
R35711-100UG	0.5 mg/ml in 1X TBS, pH7.3, with 0.5% BSA (US sourced) and 0.02% sodium azide	100 ug

[Bulk quote request](#)

Availability	1-3 business days
Species Reactivity	Human
Predicted Reactivity	Cow, Dog, Mouse, Rat
Format	Antigen affinity purified
Host	Goat
Clonality	Polyclonal (goat origin)
Isotype	Goat Ig
Purity	Antigen affinity
Gene ID	84315
Applications	Western Blot : 1-3ug/ml ELISA (peptide) LOD : 1:8000
Limitations	This MON1A antibody is available for research use only.



Western blot testing of Jurkat lysate with MON1A antibody at 2ug/ml. Predicted molecular weight: ~55kDa.

Description

Additional name(s) for this target protein: MON1 homolog A

Application Notes

Optimal dilution of the MON1A antibody should be determined by the researcher.

1. This MON1A antibody will detect isoforms a and b.

Immunogen

Amino acids RPLKTIYYTGPNE were used as the immunogen for this MON1A antibody.

Storage

Aliquot and store the MON1A antibody at -20oC.