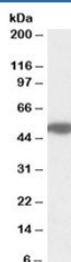


MON1A Antibody (R34211)

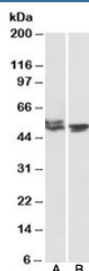
Catalog No.	Formulation	Size
R34211-100UG	0.5 mg/ml in 1X TBS, pH7.3, with 0.5% BSA (US sourced) and 0.02% sodium azide	100 ug

[Bulk quote request](#)

Availability	1-3 business days
Species Reactivity	Human, Mouse, Rat
Predicted Reactivity	Cow, Dog
Format	Antigen affinity purified
Clonality	Polyclonal (goat origin)
Isotype	Goat Ig
Purity	Antigen affinity
Gene ID	84315
Applications	Western Blot : 1-3ug/ml ELISA (peptide) LOD : 1:128000
Limitations	This MON1A antibody is available for research use only.



Western blot testing of human pancreas lysate with MON1A antibody at 1 ug/ml.
Predicted molecular weight: ~55kDa.



Western blot of mouse (A) and rat (B) testis lysates with MON1A antibody at 1 ug/ml.
Predicted molecular weight: ~55kDa.

Description

Additional name(s) for this target protein: MON1 homolog A

Application Notes

Optimal dilution of the MON1A antibody should be determined by the researcher.

1. This MON1A antibody will detect isoforms a and b of the protein.

Immunogen

Amino acids HISYLEPDTDLC were used as the immunogen for this MON1A antibody.

Storage

Aliquot and store the MON1A antibody at -20oC.