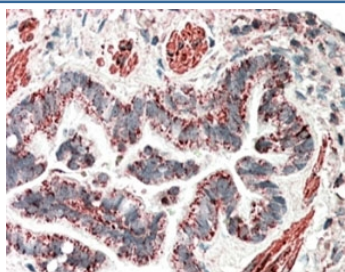


## MOB2 Antibody (R33425)

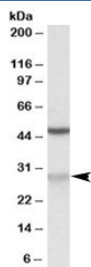
Catalog No.	Formulation	Size
R33425-100UG	0.5 mg/ml in 1X TBS, pH7.3, with 0.5% BSA (US sourced) and 0.02% sodium azide	100 ug

[Bulk quote request](#)

Availability	1-3 business days
Species Reactivity	Human
Predicted Reactivity	Cow, Dog, Mouse, Rat
Format	Antigen affinity purified
Host	Goat
Clonality	Polyclonal (goat origin)
Isotype	Goat Ig
Purity	Antigen affinity
Gene ID	81532
Applications	Western Blot : 0.02-0.1ug/ml Immunohistochemistry (FFPE) : 5-10ug/ml ELISA (peptide) LOD : 1:128000
Limitations	This MOB2 antibody is available for research use only.



IHC staining of FFPE human lung with MOB2 antibody at 5ug/ml. HIER: steamed with pH6 citrate buffer, AP-staining.



Western blot testing of Jurkat lysate with MOB2 antibody at 0.02ug/ml. The expected ~30kDa band and the additional ~48kDa band are both blocked by the immunizing peptide.

## Description

Additional name(s) for this target protein: Mps one binder kinase activator-like 2

## Application Notes

Optimal dilution of the MOB2 antibody should be determined by the researcher.

## Immunogen

Amino acids DERGKKVKCTAPQ were used as the immunogen for this MOB2 antibody.

## Storage

Aliquot and store the MOB2 antibody at -20oC.