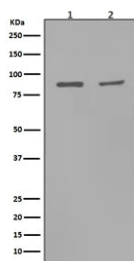


MMP9 Antibody / Matrix metalloproteinase-9 [clone BCD-13] (RQ5435)

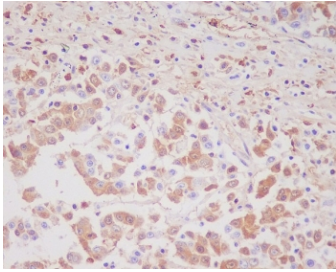
Catalog No.	Formulation	Size
RQ5435	Antibody in PBS with 0.02% sodium azide, 50% glycerol and 0.4-0.5mg/ml BSA	100 ul

[Bulk quote request](#)

Availability	1-2 weeks
Species Reactivity	Human, Rat
Format	Purified
Host	Rabbit
Clonality	Rabbit Monoclonal
Isotype	Rabbit IgG
Clone Name	BCD-13
Purity	Affinity purified
UniProt	P14780
Localization	Cytoplasmic, nuclear, secreted
Applications	Western Blot : 1:500-1:2000 Immunohistochemistry (FFPE) : 1:50-1:200
Limitations	This MMP9 antibody is available for research use only.



Western blot testing with MMP9 antibody. Expected molecular weight: ~92 kDa (precursor), 67-80 kDa (mature).



IHC staining of FFPE human colon cancer with MMP9 antibody. HIER: boil tissue sections in pH6, 10mM citrate buffer, for 10-20 min and allow to cool before testing.

Description

Proteins of the matrix metalloproteinase (MMP) family are involved in the breakdown of extracellular matrix in normal physiological processes, such as embryonic development, reproduction, and tissue remodeling, as well as in disease processes, such as arthritis and metastasis. Most MMP's are secreted as inactive proproteins which are activated when cleaved by extracellular proteinases. The enzyme encoded by this gene degrades type IV and V collagens. Studies in rhesus monkeys suggest that the enzyme is involved in IL-8-induced mobilization of hematopoietic progenitor cells from bone marrow, and murine studies suggest a role in tumor-associated tissue remodeling. [RefSeq]

Application Notes

Optimal dilution of the MMP9 antibody should be determined by the researcher.

Immunogen

A synthetic peptide specific to human MMP9 was used as the immunogen for the MMP9 antibody.

Storage

Store the MMP9 antibody at -20oC.