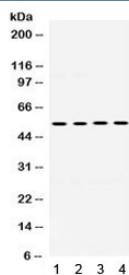


MMP8 Antibody (R31831)

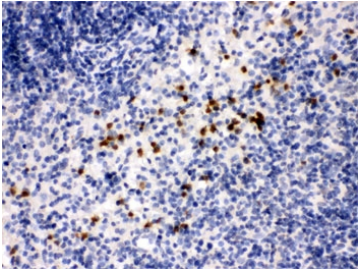
Catalog No.	Formulation	Size
R31831	0.5mg/ml if reconstituted with 0.2ml sterile DI water	100 ug

[Bulk quote request](#)

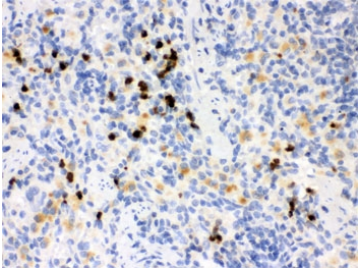
Availability	1-3 business days
Species Reactivity	Mouse, Rat
Format	Antigen affinity purified
Host	Rabbit
Clonality	Polyclonal (rabbit origin)
Isotype	Rabbit IgG
Purity	Antigen affinity
Buffer	Lyophilized from 1X PBS with 2.5% BSA and 0.025% sodium azide
UniProt	O70138
Localization	Cytoplasmic
Applications	Western Blot : 0.1-0.5ug/ml IHC (FFPE) : 0.5-1ug/ml ELISA : 0.1-0.5ug/ml (mouse protein tested); request BSA-free format for coating
Limitations	This MMP8 antibody is available for research use only.



Western blot testing of mouse 1) testis, 2) NIH3T3, 3) HEPA and 4) rat NRK cell lysate with MMP8 antibody. Expected molecular weight: 55 kDa (latent), 46, 42 kDa (active).



IHC testing of mouse spleen with MMP8 antibody. HIER: Boil the paraffin sections in pH 6, 10mM citrate buffer for 20 minutes and allow to cool prior to staining.



IHC testing of rat spleen with MMP8 antibody. HIER: Boil the paraffin sections in pH 6, 10mM citrate buffer for 20 minutes and allow to cool prior to staining.

Description

MMP8 (Matrix metalloproteinase 8) is a member of the family of matrix metalloproteinases. It is distinct from the collagenase of skin fibroblasts and synovial cells in substrate specificity and immunologic crossreactivity. MMP8 is mapped to 11q21-q22. MMP8 is an enzyme that degrades fibrillar collagens imparting strength to the fetal membranes, is expressed by leukocytes and chorionic cytotrophoblast cells. The enzyme exhibits 58% homology to human fibroblast collagenase and has the same domain structure. It consists of a 20-residue signal peptide, and an 80-residue propeptide that is lost on autolytic activation by cleavage of an M-L bond. MMP8 was found to possess 57% identity with the deduced protein sequence for fibroblast collagenase with 72% chemical similarity. Matrix metalloproteinases (MMPs) have fundamental roles in tumor progression, but most clinical trials with MMP inhibitors have not shown improvements in individuals with cancer. MMP8 has a paradoxical protective role in cancer and provides a genetic model to evaluate the molecular basis of gender differences in cancer susceptibility.

Application Notes

Optimal dilution of the MMP8 antibody should be determined by the researcher.

Immunogen

Amino acids HTPQLSRAEVKTAIEKAFHVWSVASPLTFTEILQGEAD of mouse MMP8 were used as the immunogen for the MMP8 antibody.

Storage

After reconstitution, the MMP8 antibody can be stored for up to one month at 4oC. For long-term, aliquot and store at -20oC. Avoid repeated freezing and thawing.

References (1)

