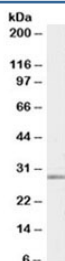


## MMP7 Antibody (R35332)

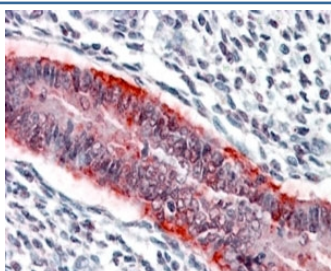
Catalog No.	Formulation	Size
R35332-100UG	0.5 mg/ml in 1X TBS, pH7.3, with 0.5% BSA (US sourced) and 0.02% sodium azide	100 ug

[Bulk quote request](#)

Availability	1-3 business days
Species Reactivity	Human
Format	Antigen affinity purified
Host	Goat
Clonality	Polyclonal (goat origin)
Isotype	Goat Ig
Purity	Antigen affinity
Gene ID	4316
Applications	Western Blot : 0.03-0.1ug/ml Immunohistochemistry (FFPE) : 3-6ug/ml ELISA (peptide) LOD : 1:64000
Limitations	This MMP7 antibody is available for research use only.



Western blot testing of human breast lysate with MMP7 antibody at 0.03ug/ml. Predicted molecular weight ~30kDa.



IHC staining of FFPE human uterus with MMP7 antibody at 3.8ug/ml. HIER: steamed with pH6 citrate buffer, AP-staining.

## Description

Additional name(s) for this target protein: Matrix metalloproteinase 7

## Application Notes

Optimal dilution of the MMP7 antibody should be determined by the researcher.

## Immunogen

Amino acids QKLYGKRSNSRKK were used as the immunogen for this MMP7 antibody.

## Storage

Aliquot and store the MMP7 antibody at -20oC.