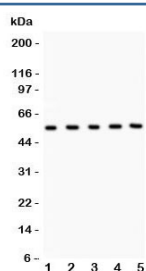


MMP3 Antibody (R31680)

Catalog No.	Formulation	Size
R31680	0.5mg/ml if reconstituted with 0.2ml sterile DI water	100 ug

Bulk quote request

Availability	1-3 business days
Species Reactivity	Human
Format	Antigen affinity purified
Clonality	Polyclonal (rabbit origin)
Isotype	Rabbit IgG
Purity	Antigen affinity
Buffer	Lyophilized from 1X PBS with 2.5% BSA and 0.025% sodium azide
Gene ID	4314
Applications	Western Blot : 0.5-1ug/ml
Limitations	This MMP3 antibody is available for research use only.



Western blot testing of MMP3 antibody and Lane 1: human placenta; 2: U20S; 3: HeLa; 4: PANC; 5: COLO320. Predicted molecular weight ~54 kDa.



Western blot testing of MMP3 antibody and recombinant human protein (0.5ng)

Description

Stromelysin-1, also known as Matrix metalloproteinase-3 (MMP-3), is an enzyme that in humans is encoded by the MMP3 gene. It is mapped to 11q22.2. Proteins of the matrix metalloproteinase (MMP) family are involved in the breakdown of extracellular matrix and during tissue remodeling in normal physiological processes, such as embryonic development and reproduction, as well as in disease processes, such as arthritis, and tumour metastasis. The MMP3 enzyme degrades collagen types II, III, IV, IX, and X, proteoglycans, fibronectin, laminin, and elastin. In addition, it can also activate other MMPs such as [MMP1](#), [MMP7](#), and [MMP9](#), rendering MMP3 crucial in connective tissue remodeling. The enzyme is thought to be involved in wound repair, progression of atherosclerosis, and tumor initiation.

Application Notes

The stated application concentrations are suggested starting amounts. Titration of the MMP3 antibody may be required due to differences in protocols and secondary/substrate sensitivity.

Immunogen

An amino acid sequence from the C-terminal of human MMP3 (RFDEKRNSMEPGFPGKQIAEDFPGIDSKIDA) was used as the immunogen for this MMP3 antibody.

Storage

After reconstitution, the MMP3 antibody can be stored for up to one month at 4°C. For long-term, aliquot and store at -20°C. Avoid repeated freezing and thawing.