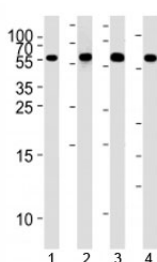


## MMP3 Antibody (F43043)

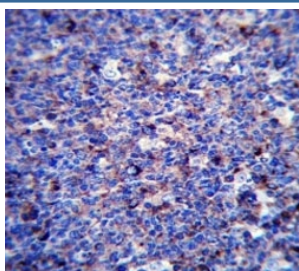
Catalog No.	Formulation	Size
F43043-0.4ML	In 1X PBS, pH 7.4, with 0.09% sodium azide	0.4 ml
F43043-0.08ML	In 1X PBS, pH 7.4, with 0.09% sodium azide	0.08 ml

[Bulk quote request](#)

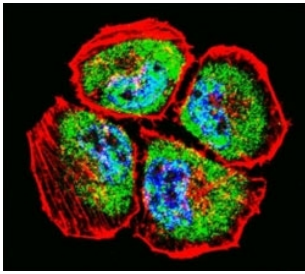
<b>Availability</b>	1-3 business days
<b>Species Reactivity</b>	Human
<b>Format</b>	Antigen affinity purified
<b>Clonality</b>	Polyclonal (rabbit origin)
<b>Isotype</b>	Rabbit Ig
<b>Purity</b>	Antigen affinity
<b>UniProt</b>	P08254
<b>Applications</b>	Western Blot : 1:1000 IHC (Paraffin) : 1:10-1:50 Immunofluorescence : 1:10-1:50
<b>Limitations</b>	This MMP3 antibody is available for research use only.



Western blot analysis of lysate from 1) HepG2, 2) NCI-H460, 3) Raji, and 4) Ramos cell line using MMP3 antibody at 1:1000. Predicted molecular weight ~54kDa.



MMP3 antibody immunohistochemistry analysis in formalin fixed and paraffin embedded human tonsil tissue.



Confocal immunofluorescent analysis of MMP3 antibody with NCI-H460 cells followed by Alexa Fluor 488-conjugated goat anti-rabbit IgG (green). Actin filaments have been labeled with Alexa Fluor 555 Phalloidin (red). DAPI was used as a nuclear counterstain (blue).

## Description

Proteins of the matrix metalloproteinase (MMP) family are involved in the breakdown of extracellular matrix in normal physiological processes, such as embryonic development, reproduction, and tissue remodeling, as well as in disease processes, such as arthritis and metastasis. Most MMP's are secreted as inactive proproteins which are activated when cleaved by extracellular proteinases. This gene encodes an enzyme which degrades fibronectin, laminin, collagens III, IV, IX, and X, and cartilage proteoglycans. The enzyme is thought to be involved in wound repair, progression of atherosclerosis, and tumor initiation. The gene is part of a cluster of MMP genes which localize to chromosome 11q22.3.

## Application Notes

Titration of the MMP3 antibody may be required due to differences in protocols and secondary/substrate sensitivity.

## Immunogen

A portion of amino acids 30-59 from the human protein was used as the immunogen for this MMP3 antibody.

## Storage

Aliquot the MMP3 antibody and store frozen at -20oC or colder. Avoid repeated freeze-thaw cycles.