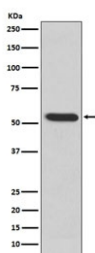


MMP3 Antibody [clone BBO-13] (RQ5214)

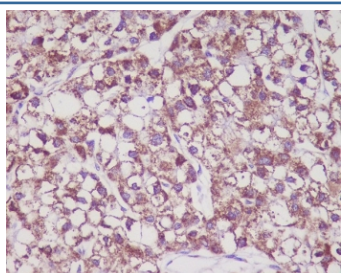
Catalog No.	Formulation	Size
RQ5214	Antibody in PBS with 0.02% sodium azide, 50% glycerol and 0.4-0.5mg/ml BSA	100 ul

[Bulk quote request](#)

Availability	1-2 weeks
Species Reactivity	Human
Format	Purified
Clonality	Rabbit Monoclonal
Isotype	Rabbit IgG
Clone Name	BBO-13
Purity	Affinity purified
UniProt	P08254
Applications	Western Blot : 1:500-1:2000 Immunohistochemistry (FFPE) : 1:50-1:200
Limitations	This MMP3 antibody is available for research use only.



Western blot testing of human recombinant protein with MMP3 antibody. Predicted molecular weight ~54 kDa.



IHC staining of FFPE human liver cancer with MMP3 antibody. HIER: boil tissue sections in pH6, 10mM citrate buffer, for 10-20 min and allow to cool before testing.

Description

Proteins of the matrix metalloproteinase (MMP) family are involved in the breakdown of extracellular matrix in normal physiological processes, such as embryonic development, reproduction, and tissue remodeling, as well as in disease processes, such as arthritis and metastasis. Most MMP's are secreted as inactive proproteins which are activated when cleaved by extracellular proteinases. The MMP3 gene encodes an enzyme which degrades fibronectin, laminin, collagens III, IV, IX, and X, and cartilage proteoglycans. The enzyme is thought to be involved in wound repair, progression of atherosclerosis, and tumor initiation. [RefSeq]

Application Notes

Optimal dilution of the MMP3 antibody should be determined by the researcher.

Immunogen

A synthetic peptide specific to human MMP3 was used as the immunogen for the MMP3 antibody.

Storage

Store the MMP3 antibody at -20oC.