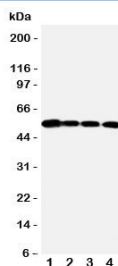


MMP24 Antibody (R31336)

Catalog No.	Formulation	Size
R31336	0.5mg/ml if reconstituted with 0.2ml sterile DI water	100 ug

[Bulk quote request](#)

Availability	1-3 business days
Species Reactivity	Human, Mouse, Rat
Format	Antigen affinity purified
Clonality	Polyclonal (rabbit origin)
Isotype	Rabbit IgG
Purity	Antigen affinity
Buffer	Lyophilized from 1X PBS with 2.5% BSA and 0.025% sodium azide/thimerosal
UniProt	Q9Y5R2
Applications	Western Blot : 0.5-1ug/ml
Limitations	This MMP24 antibody is available for research use only.



Western blot testing of MMP24 antibody and Lane 1: PANC; 2: HeLa; 3: SMMC-7721; 4: A549 cell lysate

Description

Matrix metalloproteinase-24, also known as MT5MMP and previously as MMP25, is an enzyme that in humans is encoded by the MMP24 gene. Proteins of the matrix metalloproteinase (MMP) family are involved in the breakdown of extracellular matrix in normal physiological processes, such as embryonic development, reproduction, and tissue remodeling, as well as in disease processes, such as arthritis and metastasis. Most MMPs are secreted as inactive proproteins which are activated when cleaved by extracellular proteinases. However, the protein encoded by this gene is a member of the membrane-type MMP (MT-MMP) subfamily; each member of this subfamily contains a potential transmembrane domain suggesting that these proteins are expressed at the cell surface rather than secreted. This protein activates MMP2 by cleavage. The gene has previously been referred to as MMP25 but has been renamed

MMP24. This gene may be a proteoglycanase involved in degradation of proteoglycans, such as dermatan sulfate and chondroitin sulfate proteoglycans.

Application Notes

The stated application concentrations are suggested starting amounts. Titration of the MMP24 antibody may be required due to differences in protocols and secondary/substrate sensitivity.

Immunogen

An amino acid sequence from the N-terminus of human Matrix metalloproteinase-24 (YHEIKSDRKEADIMIFFA) was used as the immunogen for this MMP24 antibody (100% homologous in human, mouse and rat).

Storage

After reconstitution, the MMP24 antibody can be stored for up to one month at 4°C. For long-term, aliquot and store at -20°C. Avoid repeated freezing and thawing.