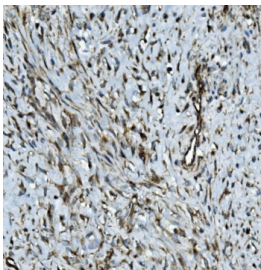


MMP2 Antibody (RQ5741)

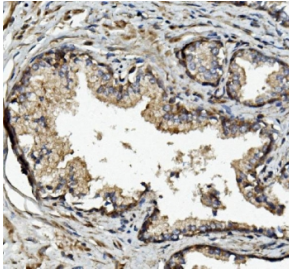
Catalog No.	Formulation	Size
RQ5741	0.5mg/ml if reconstituted with 0.2ml sterile DI water	100 ug

[Bulk quote request](#)

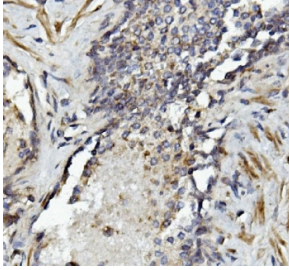
Availability	1-3 business days
Species Reactivity	Human, Rat
Format	Antigen affinity purified
Host	Rabbit
Clonality	Polyclonal (rabbit origin)
Isotype	Rabbit IgG
Purity	Affinity purified
Buffer	Lyophilized from 1X PBS with 2% Trehalose and 0.025% sodium azide
UniProt	P08253
Applications	Western Blot : 0.5-1ug/ml Immunohistochemistry : 1-2ug/ml Flow Cytometry : 1-3ug/million cells Direct ELISA : 0.1-0.5ug/ml
Limitations	This MMP2 antibody is available for research use only.



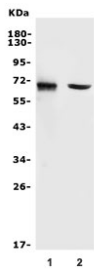
IHC staining of FFPE human breast cancer with MMP2 antibody. HIER: boil tissue sections in pH8 EDTA for 20 min and allow to cool before testing.



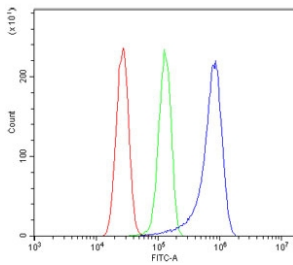
IHC staining of FFPE human prostate cancer with MMP2 antibody. HIER: boil tissue sections in pH8 EDTA for 20 min and allow to cool before testing.



IHC staining of FFPE human prostate cancer with MMP2 antibody. HIER: boil tissue sections in pH8 EDTA for 20 min and allow to cool before testing.



Western blot testing of 1) human U-87 MG and 2) rat lung lysate with MMP2 antibody. Expected molecular weight: ~72 kDa (pro form), ~63 kDa (cleaved form).



Flow cytometry testing of human U-87 MG cells with MMP2 antibody at 1ug/million cells (blocked with goat sera); Red=cells alone, Green=isotype control, Blue= MMP2 antibody.

Description

Matrix metalloproteinase-2 (MMP2) is a Type IV collagenase, 72-kD, which is also known as gelatinase and is a member of a group of secreted zinc metalloproteases. The MMP2 gene is 17 kb long with 13 exons varying in size from 110 to 901 bp and 12 introns ranging from 175 to 4,350 bp, located within a region of human chromosome 16q13. In addition, the extra exons encode the amino acids of the fibronectin-like domain which has so far been found in only the 72- and 92-kDa type IV collagenase. MMP2, which has a critical role in the binding of progelatinase A and TIMP4 via the C-terminal hemopexin-like domain (C domain), is functionally associated on the surface of angiogenic blood vessels. Not only is a likely effector of endometrial menstrual breakdown, MMP2 is also effector and regulator of the inflammatory response. Moreover, MMP2 could be helpful in diagnosing Takayasu arteritis.

Application Notes

Optimal dilution of the MMP2 antibody should be determined by the researcher.

Immunogen

Recombinant human protein (amino acids L411-C660) was used as the immunogen for the MMP2 antibody.

Storage

After reconstitution, the MMP2 antibody can be stored for up to one month at 4°C. For long-term, aliquot and store at -20°C. Avoid repeated freezing and thawing.