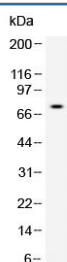


MMP2 Antibody (R32672)

| Catalog No. | Formulation | Size |
|-------------|---|--------|
| R32672 | 0.5mg/ml if reconstituted with 0.2ml sterile DI water | 100 ug |

[Bulk quote request](#)

| | |
|---------------------------|---|
| Availability | 1-3 business days |
| Species Reactivity | Human, Mouse, Rat |
| Format | Antigen affinity purified |
| Clonality | Polyclonal (rabbit origin) |
| Isotype | Rabbit IgG |
| Purity | Antigen affinity |
| Buffer | Lyophilized from 1X PBS with 2.5% BSA, 0.025% sodium azide |
| UniProt | P08253 |
| Applications | Western Blot : 0.5-1ug/ml ELISA : 0.1-0.5ug/ml (human protein tested; request BSA-free format for coating) |
| Limitations | This MMP2 antibody is available for research use only. |



Western blot testing of human recombinant MMP2 protein (1ng/lane) with MMP2 antibody at 0.5ug/ml.

Description

Matrix metalloproteinase-2 (MMP2) is a Type IV collagenase, 72-kD, which is also known as gelatinase and is a member of a group of secreted zinc metalloproteases. The MMP2 gene is 17 kb long with 13 exons varying in size from 110 to 901 bp and 12 introns ranging from 175 to 4,350 bp, located within a region of human chromosome 16q13. In addition, the extra exons encode the amino acids of the fibronectin-like domain which has so far been found in only the 72- and 92-kDa type IV collagenase. MMP2, which has a critical role in the binding of progelatinase A and TIMP4 via the C-terminal hemopexin-like domain (C domain), is functionally associated on the surface of angiogenic blood vessels. Not only is a likely effector of endometrial menstrual breakdown, MMP2 is also effector and regulator of the inflammatory

response. Moreover, MMP2 could be helpful in diagnosing Takayasu arteritis.

Application Notes

Optimal dilution of the MMP2 antibody should be determined by the researcher.

Immunogen

Amino acids K429-C660 from the human protein were used as the immunogen for the MMP2 antibody.

Storage

After reconstitution, the MMP2 antibody can be stored for up to one month at 4°C. For long-term, aliquot and store at -20°C. Avoid repeated freezing and thawing.