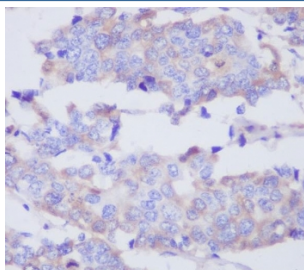


## MMP2 Antibody [clone BBA-13] (RQ5213)

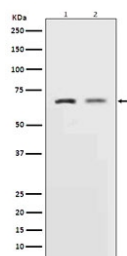
Catalog No.	Formulation	Size
RQ5213	Antibody in PBS with 0.02% sodium azide, 50% glycerol and 0.4-0.5mg/ml BSA	100 ul

[Bulk quote request](#)

Availability	1-2 weeks
Species Reactivity	Human, Rat
Format	Purified
Host	Rabbit
Clonality	Rabbit Monoclonal
Isotype	Rabbit IgG
Clone Name	BBA-13
Purity	Affinity purified
UniProt	P08253
Applications	Western Blot : 1:500-1:2000 Immunohistochemistry (FFPE) : 1:50-1:200
Limitations	This MMP2 antibody is available for research use only.



IHC staining of FFPE human breast cancer with MMP2 antibody. HIER: boil tissue sections in pH6, 10mM citrate buffer, for 10-20 min and allow to cool before testing.



Western blot testing of 1) rat L6 and 2) human HeLa cell lysate with MMP2 antibody. Expected molecular weight: ~72 kDa (pro form), ~63 kDa (cleaved form).

## Description

The MMP2 gene is a member of the matrix metalloproteinase (MMP) gene family, that are zinc-dependent enzymes capable of cleaving components of the extracellular matrix and molecules involved in signal transduction. The protein encoded by this gene is a gelatinase A, type IV collagenase, that contains three fibronectin type II repeats in its catalytic site that allow binding of denatured type IV and V collagen and elastin. Unlike most MMP family members, activation of this protein can occur on the cell membrane. This enzyme can be activated extracellularly by proteases, or, intracellularly by its S-glutathiolation with no requirement for proteolytical removal of the pro-domain. This protein is thought to be involved in multiple pathways including roles in the nervous system, endometrial menstrual breakdown, regulation of vascularization, and metastasis. Mutations in this gene have been associated with Winchester syndrome and Nodulosis-Arthropathy-Osteolysis (NAO) syndrome. [RefSeq]

## Application Notes

Optimal dilution of the MMP2 antibody should be determined by the researcher.

## Immunogen

A synthetic peptide specific to human MMP2 was used as the immunogen for the MMP2 antibody.

## Storage

Store the MMP2 antibody at -20oC.