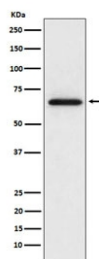


MMP2 Antibody [clone ADGF-13] (RQ5212)

| Catalog No. | Formulation | Size |
|-------------|----------------------------------------------------------------------------|--------|
| RQ5212 | Antibody in PBS with 0.02% sodium azide, 50% glycerol and 0.4-0.5mg/ml BSA | 100 ul |

[Bulk quote request](#)

| | |
|--------------------|--------------------------------------------------------|
| Availability | 1-2 weeks |
| Species Reactivity | Human, Rat |
| Format | Purified |
| Clonality | Rabbit Monoclonal |
| Isotype | Rabbit IgG |
| Clone Name | ADGF-13 |
| Purity | Affinity purified |
| UniProt | P08253 |
| Applications | Western Blot : 1:500-1:2000 |
| Limitations | This MMP2 antibody is available for research use only. |



Western blot testing of rat L6 cell lysate with MMP2 antibody. Expected molecular weight: ~72 kDa (pro form), ~63 kDa (cleaved form).

Description

Ubiquitous metalloproteinase that is involved in diverse functions such as remodeling of the vasculature, angiogenesis, tissue repair, tumor invasion, inflammation, and atherosclerotic plaque rupture. As well as degrading extracellular matrix proteins, can also act on several nonmatrix proteins such as big endothelial 1 and beta-type CGRP promoting vasoconstriction.

Application Notes

Optimal dilution of the MMP2 antibody should be determined by the researcher.

Immunogen

A synthetic peptide specific to human MMP2 was used as the immunogen for the MMP2 antibody.

Storage

Store the MMP2 antibody at -20oC.