

## MMP2 Antibody [clone 6E3F8] (F54520)

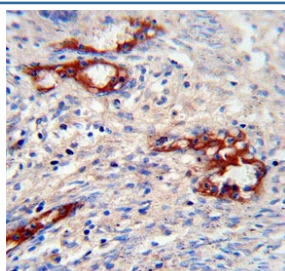
Catalog No.	Formulation	Size
F54520-0.4ML	In 1X PBS, pH 7.4, with 0.09% sodium azide	0.4 ml
F54520-0.08ML	In 1X PBS, pH 7.4, with 0.09% sodium azide	0.08 ml

[Bulk quote request](#)

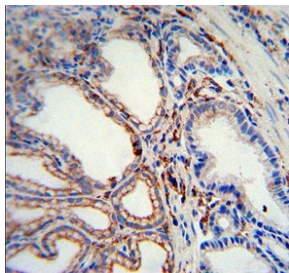
<b>Availability</b>	1-3 business days
<b>Species Reactivity</b>	Human
<b>Format</b>	Purified
<b>Clonality</b>	Monoclonal (mouse origin)
<b>Isotype</b>	IgG2b, kappa
<b>Clone Name</b>	6E3F8
<b>Purity</b>	Protein G affinity
<b>UniProt</b>	P08253
<b>Applications</b>	Western Blot : 1:500-1:2000 Immunohistochemistry (FFPE) : 1:25 Immunofluorescence : 1:25
<b>Limitations</b>	This MMP2 antibody is available for research use only.

kDa  
130  
95  
72  
55

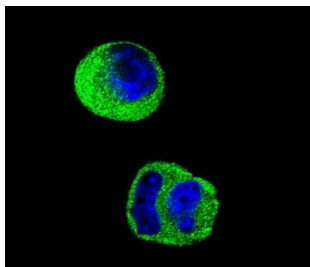
Western blot testing of human T-47D cell lysate with MMP2 antibody. Predicted molecular weight ~72 kDa.



IHC testing of FFPE human prostate carcinoma tissue with MMP2 antibody. HIER: steam section in pH6 citrate buffer for 20 min and allow to cool prior to staining.



IHC testing of FFPE human gastric carcinoma tissue with MMP2 antibody. HIER: steam section in pH6 citrate buffer for 20 min and allow to cool prior to staining.



Immunofluorescent staining of human MCF7 cells with MMP2 antibody (green) and DAPI nuclear stain (blue).

## Description

Proteins of the matrix metalloproteinase (MMP) family are involved in the breakdown of extracellular matrix in normal physiological processes, such as embryonic development, reproduction, and tissue remodeling, as well as in disease processes, such as arthritis and metastasis. Most MMP's are secreted as inactive proproteins which are activated when cleaved by extracellular proteinases. This gene encodes an enzyme which degrades type IV collagen, the major structural component of basement membranes. The enzyme plays a role in endometrial menstrual breakdown, regulation of vascularization and the inflammatory response. Mutations in this gene have been associated with Winchester syndrome and Nodulosis-Arthropathy-Osteolysis (NAO) syndrome. Two transcript variants encoding different isoforms have been found for this gene.

## Application Notes

The stated application concentrations are suggested starting points. Titration of the MMP2 antibody may be required due to differences in protocols and secondary/substrate sensitivity.

## Immunogen

Recombinant human protein was used as the immunogen for the MMP2 antibody.

## Storage

Aliquot the MMP2 antibody and store frozen at -20oC or colder. Avoid repeated freeze-thaw cycles.