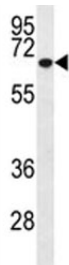


MMP2 Antibody [clone 6E3F8] (F53512)

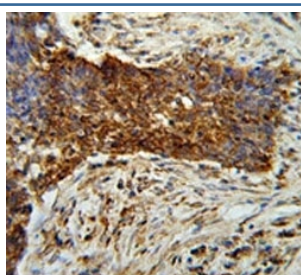
Catalog No.	Formulation	Size
F53512-0.1ML	In ascites with 0.09% sodium azide	0.1 ml

[Bulk quote request](#)

Availability	1-3 business days
Species Reactivity	Human
Format	Ascites
Host	Mouse
Clonality	Monoclonal (mouse origin)
Isotype	Mouse IgG2b, k
Clone Name	6E3F8
Purity	Ascites
UniProt	P08253
Applications	Western Blot : 1:200-1:1000 IHC (Paraffin) : 1:50-1:100
Limitations	This MMP2 antibody is available for research use only.



Western blot analysis of MMP2 antibody and T47D lysate (1:200). Expected molecular weight: ~72 kDa (pro form), ~63 kDa (cleaved form).



MMP2 antibody immunohistochemistry analysis in formalin fixed and paraffin embedded human lung carcinoma.

Description

Ubiquitous metalloproteinase that is involved in diverse functions such as remodeling of the vasculature, angiogenesis, tissue repair, tumor invasion, inflammation, and atherosclerotic plaque rupture. As well as degrading extracellular matrix proteins, can also act on several nonmatrix proteins such as big endothelial 1 and beta-type CGRP promoting vasoconstriction. Also cleaves KISS at a Gly-|-Leu bond. Appears to have a role in myocardial cell death pathways. Contributes to myocardial oxidative stress by regulating the activity of GSK3beta. Cleaves GSK3beta in vitro. Involved in the formation of the fibrovascular tissues in association with MMP14.

PEX, the C-terminal non-catalytic fragment of MMP2, possesses anti-angiogenic and anti-tumor properties and inhibits cell migration and cell adhesion to FGF2 and vitronectin. Ligand for integrin α 5 β 3 on the surface of blood vessels. [UniProt]

Application Notes

Titration of the MMP2 antibody may be required due to differences in protocols and secondary/substrate sensitivity.

Immunogen

This MMP2 antibody was produced from mouse immunized with MMP2 recombinant protein.

Storage

Aliquot the MMP2 antibody and store frozen at -20oC or colder. Avoid repeated freeze-thaw cycles.