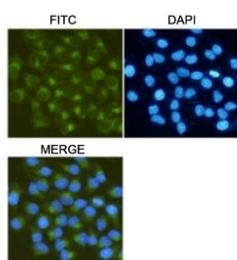


## MMP2 Antibody [clone 3A8-C1-E8] (F54029)

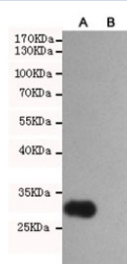
Catalog No.	Formulation	Size
F54029-0.1ML	In PBS with 50% glycerol and 0.03% ProClin 300	0.1 ml

**Bulk quote request**

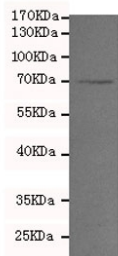
<b>Availability</b>	1-3 business days
<b>Species Reactivity</b>	Human, Rat
<b>Format</b>	Purified
<b>Clonality</b>	Monoclonal (mouse origin)
<b>Isotype</b>	Mouse IgG1
<b>Clone Name</b>	3A8-C1-E8
<b>Purity</b>	Protein G affinity
<b>UniProt</b>	P08253
<b>Applications</b>	Western Blot : 1:1000 ICC/IF : 1:50
<b>Limitations</b>	This MMP2 antibody is available for research use only.



ICC/IF testing of HeLa cells, fixed fixed by anhydrous methanol at -20oC, with MMP2 antibody at 1:50. DAPI was used to stain nuclei (blue).



Western blot testing of A) transfected (human MMP2, partial) and B) untransfected CHO-K1 cell lysate with MMP2 antibody at 1:2000. Expected molecular weight of the partial protein: ~30 kDa.



Western blot testing of mouse Raw264.7 cell lysate with MMP2 antibody at 1:200.  
Expected molecular weight: ~72 kDa (pro form), ~63 kDa (cleaved form).

## Description

Ubiquitous metalloproteinase that is involved in diverse functions such as remodeling of the vasculature, angiogenesis, tissue repair, tumor invasion, inflammation, and atherosclerotic plaque rupture. As well as degrading extracellular matrix proteins, can also act on several nonmatrix proteins such as big endothelial 1 and beta-type CGRP promoting vasoconstriction. [UniProt]

## Application Notes

The stated application concentrations are suggested starting points. Titration of the MMP2 antibody may be required due to differences in protocols and secondary/substrate sensitivity.

## Immunogen

A human recombinant protein was used as the immunogen for this MMP2 antibody.

## Storage

Store the MMP2 antibody at -20°C.