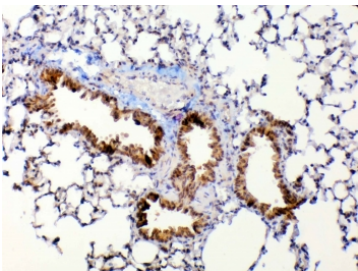


Mmp13 Antibody / Collagenase 3 (RQ4020)

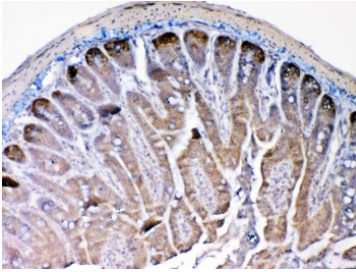
Catalog No.	Formulation	Size
RQ4020	0.5mg/ml if reconstituted with 0.2ml sterile DI water	100 ug

Bulk quote request

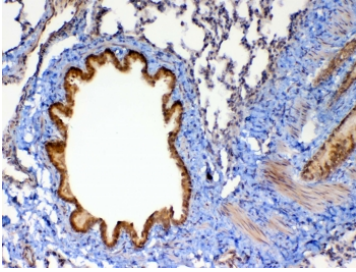
Availability	1-3 business days
Species Reactivity	Mouse, Rat
Format	Antigen affinity purified
Host	Rabbit
Clonality	Polyclonal (rabbit origin)
Isotype	Rabbit IgG
Purity	Antigen affinity purified
Buffer	Lyophilized from 1X PBS with 2% Trehalose and 0.025% sodium azide
UniProt	P23097
Localization	Secreted
Applications	Western Blot : 0.5-1ug/ml IHC (FFPE) : 1-2ug/ml Direct ELISA : 0.1-0.5ug/ml
Limitations	This Mmp13 antibody is available for research use only.



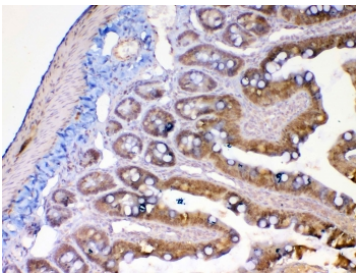
IHC testing of FFPE mouse lung tissue with Mmp13 antibody at 1ug/ml. Required HIER: steam section in pH6 citrate buffer for 20 min and allow to cool prior to testing.



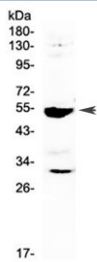
IHC testing of FFPE mouse small intestine tissue with Mmp13 antibody at 1ug/ml. Required HIER: steam section in pH6 citrate buffer for 20 min and allow to cool prior to testing.



IHC testing of FFPE rat lung tissue with Mmp13 antibody at 1ug/ml. Required HIER: steam section in pH6 citrate buffer for 20 min and allow to cool prior to testing.



IHC testing of FFPE rat small intestine tissue with Mmp13 antibody at 1ug/ml. Required HIER: steam section in pH6 citrate buffer for 20 min and allow to cool prior to testing.



Western blot testing of rat RH35 cell lysate with Mmp13 antibody at 0.5ug/ml. Predicted molecular weight ~54 kDa.

Description

Collagenase 3 is an enzyme that in humans is encoded by the MMP13 gene. This gene encodes a member of the peptidase M10 family of matrix metalloproteinases (MMPs). Proteins in this family are involved in the breakdown of extracellular matrix in normal physiological processes, such as embryonic development, reproduction, and tissue remodeling, as well as in disease processes, such as arthritis and metastasis. The encoded preproprotein is proteolytically processed to generate the mature protease. This protease cleaves type II collagen more efficiently than types I and III. It may be involved in articular cartilage turnover and cartilage pathophysiology associated with osteoarthritis. Mutations in this gene are associated with metaphyseal anadysplasia. This gene is part of a cluster of MMP genes on chromosome 11.

Application Notes

Optimal dilution of the Mmp13 antibody should be determined by the researcher.

Immunogen

A recombinant rat partial protein corresponding to amino acids Y99-H335 was used as the immunogen for the Mmp13 antibody.

Storage

After reconstitution, the Mmp13 antibody can be stored for up to one month at 4°C. For long-term, aliquot and store at -20°C. Avoid repeated freezing and thawing.